

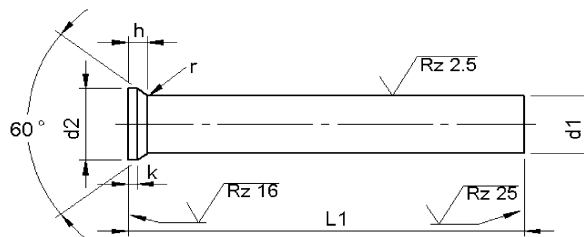
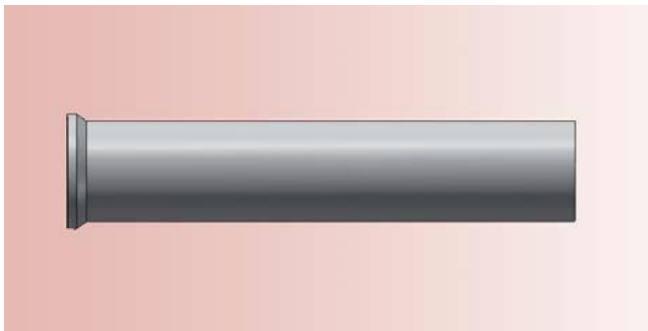


Price List

Production Program



DIN 9861 D HWS Punches



Material: HWS (1.2379)

Hardness: Shaft: 62 ±2 HRC

Head: 50 ±5 HRC

DISCONTINUED

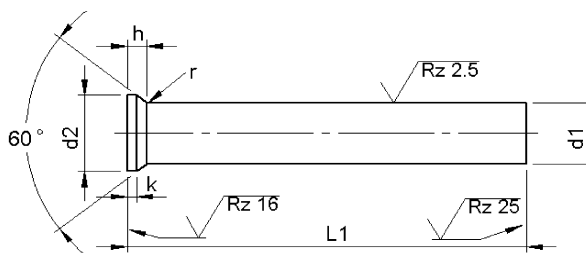
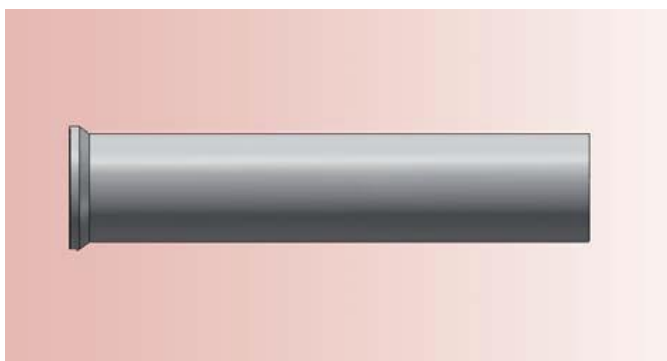
d ₁	h ₆	d ₂ +0.05 -0.05	k +0.2 0	l ₁ +0.5 0						
				71	80	90	100	120	150	
				Price by piece in EUROS						
0.5		0.9	0.2	5,35						
0.6		1.1		5,35						
0.7		1.3		5,08						
0.8		1.4	0.4	5,08						
0.9		1.6		5,08						
1.0	t/m	1.1	0.5	3,99	4,67	5,28	5,96			
1.2	t/m	1.3		3,99	4,67	5,28	5,96			
1.4	t/m	1.5		3,99	4,67	5,28	5,96			
1.6	t/m	1.7		3,99	4,67	5,28	5,96			
1.8	t/m	1.9		3,99	4,67	5,28	5,96			
2.0		3.0		3,72	4,06	4,67	5,21	7,51		
2.1	t/m	2.2		3,72	4,06	4,67	5,21	7,51		
2.3	t/m	2.5		3,72	4,06	4,67	5,21	7,51		
2.6	t/m	2.9		3,72	4,06	4,67	5,21	7,51		
3.0	t/m	3.4		3,72	4,06	4,67	5,21	7,51		
3.5	t/m	3.9		4,20	4,54	5,15	5,89	8,33		
4.0	t/m	4.4		3,86	4,33	4,81	5,42	7,72	11,51	
4.5	t/m	4.9	4,20	4,47	5,01	5,89	8,33	12,46		
5.0	t/m	5.4	4,20	4,47	5,01	5,89	8,33	12,46		
5.5	t/m	5.9	4,20	4,54	5,35	5,89	8,33	12,52		
6.0	t/m	6.4	4,20	4,54	5,35	5,89	8,33	12,52		
6.5	+	7.0	4,47	4,87	5,55	6,23	8,87	13,27		
7.5	+	8.0	4,67	5,08	5,89	6,43	9,27	13,88		
8.5	+	9.0	5,21	5,82	6,50	7,38	10,43	15,57		
9.5	+	10.0	6,30	6,91	7,85	8,87	12,52	18,75		
10.5	+	11.0	6,91	7,72	8,67	9,75	13,81	20,72		
11.5	+	12.0	7,85	8,60	9,75	10,97	15,71	23,56		
12.5	+	13.0	8,12	9,14	10,36	11,51	16,25	24,37		
			1.0							

Intermediate diameters, other lengths and special materials e.g. ASP, CPM and Vanadis, are available on request.

See page 2 for extra charges and discount.

Gerimex b.v. Phone +31 74 2436655 . info@gerimex.com . www.gerimex.com

DIN 9861 D HWS Punches



Material: HSS (1.3343)
Hardness: Shaft: 64 ±2 HRC
Head: 50 ±5 HRC

DISCONTINUED

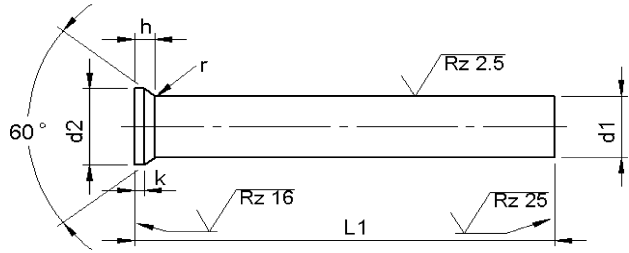
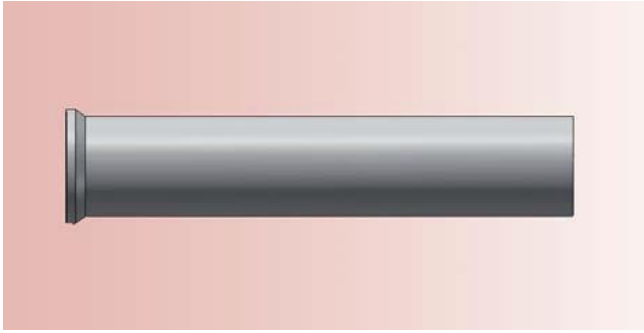
d ₁			d ₂ +0.05 -0.05	k +0.2 0	l ₁ +0.5 0					
					71	80	90	100	120	150
h ₆					Price by piece in EUROS					
13.5	+	14.0	16.0	1.5	9,48	10,49	11,85	13,34	18,95	28,43
14.5	+	15.0	17.0		11,37	12,52	14,28	15,97	22,68	34,05
15.5	+	16.0	18.0		12,66	14,01	15,84	17,73	25,25	37,91
16.5			19.0		13,13	14,42	16,38	18,41	26,20	39,33
17.0			19.5		13,13	14,42	16,38	18,41	26,20	39,33
17.5			20.0	2.0	14,08	15,43	18,75	19,77	28,09	42,17
18.0			20.5		14,08	15,43	18,75	19,77	28,09	42,17
18.5			21.0		15,03	16,52	19,36	21,05	30,05	45,01
19.0			21.5		15,03	16,52	19,36	21,05	30,05	45,01
19.5			22.0		15,97	17,60	19,97	22,34	31,95	47,86
20.0			22.5		15,97	17,60	19,97	22,34	31,95	47,86
20.5			23.0		16,92	18,61	21,19	23,69	33,85	50,63
21.0			23.5		16,92	18,61	21,19	23,69	33,85	50,63
21.5			24.0		17,87	19,70	22,34	24,98	35,74	53,61
22.0			24.5		17,87	19,70	22,34	24,98	35,74	53,61
22.5			25.0		18,82	20,65	23,56	26,40	37,64	56,45
23.0			25.5		18,82	20,65	23,56	26,40	37,64	56,45
23.5			26.0		19,77	21,73	24,71	27,69	39,53	59,30
24.0			26.5		19,77	21,73	24,71	27,69	39,53	59,30
24.5			27.0		20,71	22,81	25,93	29,04	41,43	62,14
25.0			27.5	20,71	22,81	25,93	29,04	41,43	62,14	

Intermediate diameters, other lengths and special materials e.g. ASP, CPM and Vanadis, are available on request.

Extra charges and discounts:

- 1 Piece per dimension + 50%
- 2-3 Pieces per dimension + 25%
- 25 Pieces per dimension – 5%
- 50 Pieces per dimension – 7%
- 100 Pieces per dimension – 10%

DIN 9861 D HSS Punches



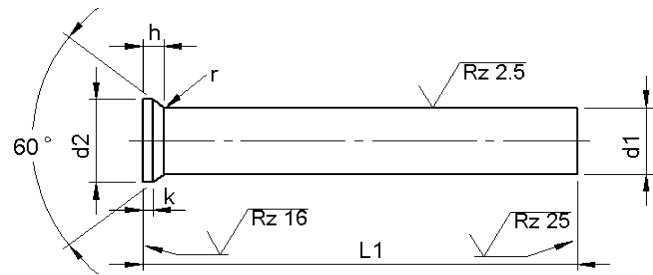
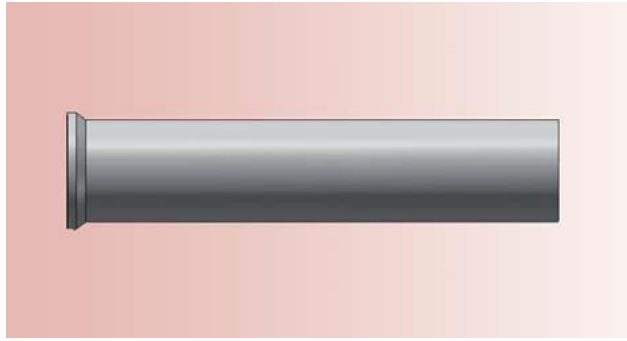
Material: HSS (1.3343)
Hardness: Shaft: 64 ±2 HRC
Head: 50 ±5 HRC

d ₁ h ₆	d ₂ +0.05 -0.05	k +0.2 0	l ₁ +0.5 0							
			71	80	90	100	120	150		
			Price by piece in EUROS							
0.5	0.9	0.2	6,31							
0.6	1.1		6,31							
0.7	1.3		5,97							
0.8	1.4	0.4	5,97							
0.9	1.6		5,97							
1.0	t/m	1.1	1.8	0.5	4,89	5,50	6,11	6,85		
1.2	t/m	1.3	2.0		4,89	5,50	6,11	5,50		
1.4	t/m	1.5	2.2		4,89	5,50	6,11	5,50		
1.6	t/m	1.7	2.5		4,89	5,50	6,11	5,50		
1.8	t/m	1.9	2.8		4,89	5,50	6,11	5,50		
2.0			3.0		4,48	4,89	5,63	6,18	8,89	
2.1	t/m	2.2	3.2		4,48	4,89	5,63	6,18	8,89	
2.3	t/m	2.5	3.5		4,48	4,89	5,63	6,18	8,89	
2.6	t/m	2.9	4.0		4,48	4,89	5,63	6,18	8,89	
3.0	t/m	3.4	4.5		4,48	4,89	5,63	6,18	8,89	
3.5	t/m	3.9	5.0		4,89	5,50	6,11	6,85	9,77	
4.0	t/m	4.4	5.5		4,48	4,89	5,63	6,18	8,89	
4.5	t/m	4.9	6.0		4,89	5,50	6,11	6,85	9,77	14,59
5.0	t/m	5.4	6.5		5,16	5,70	6,31	7,19	10,18	15,27
5.5	t/m	5.9	7.0		5,09	5,70	6,31	7,19	10,18	15,27
6.0	t/m	6.4	8.0	5,09	5,70	6,31	7,19	10,18	15,27	
6.5	+	7.0	9.0	5,63	6,04	6,92	7,74	11,20	16,76	
7.5	+	8.0	10.0	5,77	6,24	7,26	8,01	11,47	17,17	
8.5	+	9.0	11.0	6,31	6,99	7,80	8,82	12,56	18,80	
9.5	+	10.0	12.0	7,47	8,28	9,30	10,45	14,86	22,26	
10.5	+	11.0	13.0	8,35	9,09	10,32	11,67	16,63	24,91	
11.5	+	12.0	14.0	9,09	10,04	11,33	12,76	18,12	27,15	
12.5	+	13.0	15.0	11,13	12,15	13,85	15,47	22,19	33,32	

Intermediate diameters, other lengths and special materials e.g. ASP, CPM and Vanadis, are available on request.

See page 2 for extra charges and discount.

DIN 9861D HSS Punches



Materiaal: HSS (1.3343)
Hardheid: Schacht: 64 ±2 HRC
Kop: 50 ±5 HRC

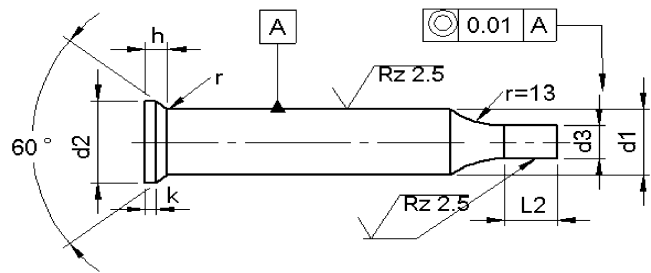
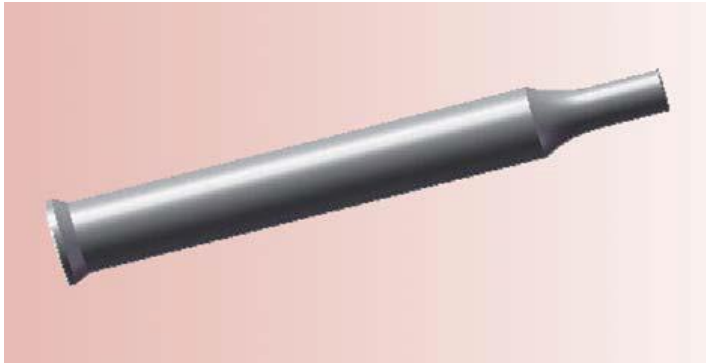
d ₁			d ₂ +0.05 -0.05	k +0.2 0	l ₁ +0.5 0					
					71	80	90	100	120	150
h ₆					Price by piece in EUROS					
13.5	+	14.0	16.0	1.5	12,76	13,91	15,88	17,71	25,45	38,21
14.5	+	15.0	17.0		13,64	15,00	17,03	19,07	27,28	40,86
15.5	+	16.0	18.0		15,27	16,76	19,07	21,38	30,54	45,81
16.5			19.0	2.0	15,68	17,24	19,61	21,92	31,35	47,03
17.0			19.5		15,68	17,24	19,61	21,92	31,35	47,03
17.5			20.0		16,70	18,39	20,90	23,41	33,39	50,09
18.0			20.5		16,70	18,39	20,90	23,41	33,39	50,09
18.5			21.0		17,71	19,48	22,12	24,77	35,43	39,50
19.0			21.5		17,71	19,48	22,12	24,77	35,43	39,50
19.5			22.0		18,73	20,63	23,41	26,26	37,46	58,23
20.0			22.5		18,73	20,63	23,41	26,26	37,46	58,23
20.5			23.0		19,75	21,72	24,64	27,62	39,36	59,04
21.0			23.5		20,22	21,72	24,64	27,62	39,36	60,67
21.5			24.0		20,77	22,80	25,93	29,05	41,54	62,30
22.0			24.5		20,77	22,80	25,93	29,05	41,54	62,30
22.5			25.0		21,79	23,35	27,21	30,47	43,57	65,36
23.0			25.5		21,79	23,35	27,21	30,47	43,57	65,36
23.5			26.0		22,80	25,04	28,44	31,90	45,61	68,41
24.0			26.5	22,80	25,04	28,44	31,90	45,61	68,41	
24.5			27.0	23,82	26,20	29,73	33,32	47,64	71,46	
25.0			27.5	23,82	26,20	29,73	33,32	47,64	71,47	

Intermediate diameters, other lengths and special materials e.g. ASP, CPM and Vanadis, are available on request.

Extra charges and discounts:

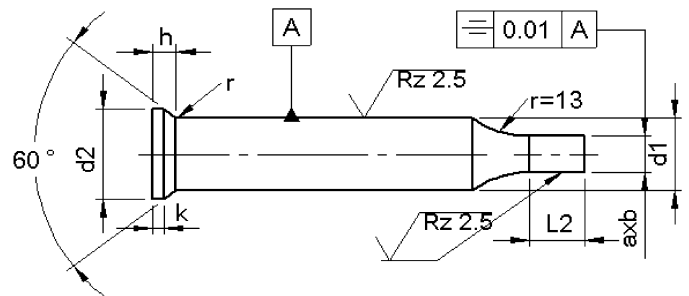
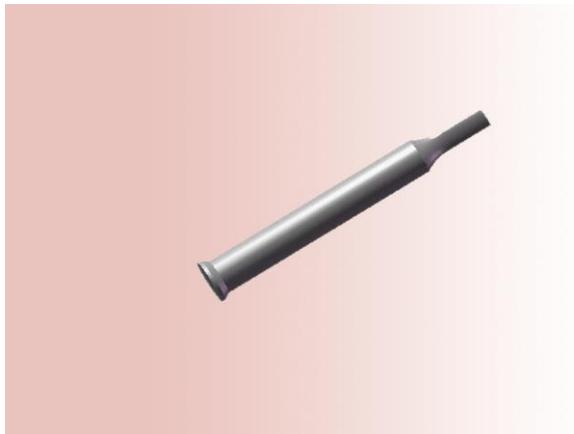
- 1 Piece per dimension + 50%
- 2-3 Pieces per dimension + 25%
- 25 Pieces per dimension – 5%
- 50 Pieces per dimension – 7%
- 100 Pieces per dimension – 10%

DIN 9861 C
Reduced shaft 'Round'

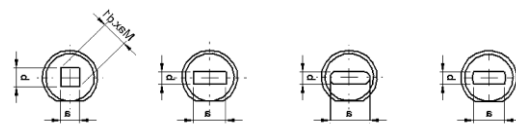


d ₁	d ₃ h ₆		l ₂ +0.5 0				Price by piece in EUROS/punch not included
			7	10	13	17	
≥ 1.5	≥ 0.5	- 1.4	•				3,38
2	0.5	- 1,9	•				3,38
3	1.6	- 2,9	•				3,38
4	1.6	- 3,9		•			3,38
5	2.5	- 4,9		•			3,73
6	3	- 5,9		•			4,33
8	4	- 7,9			•		5,07
10	5	- 9,9				•	6,02
13	9	- 12,9				•	6,90
16	12	- 15,9				•	9,40
20	16	- 19,9				•	13,06
25	20	- 24,9				•	17,38
32	25	- 31,9				•	21,26
38	30	- 37,9				•	23,08

DIN 9861 ... Reduced shaft 'Form'



type ..S type ..R type ..O type ..F



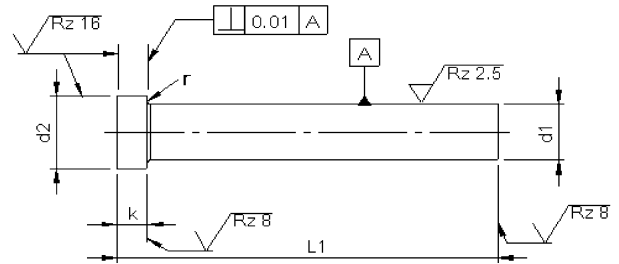
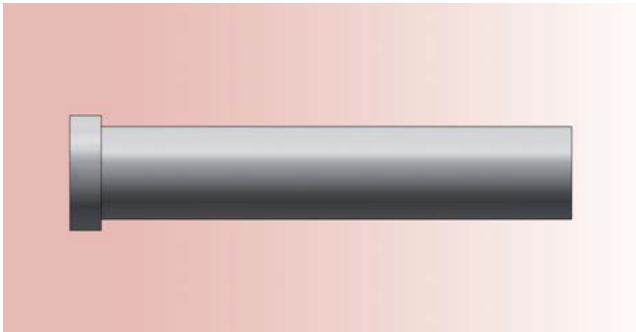
d ₁	AxB ± 0,01			l ₁ +0.5 0				
	B ≥	-	A ≤	Price by piece in EUROS				
				10	13	17	Key flat	
5	2,5	-	4,9	•			21,32	5,57
6	3,0	-	5,9	•			23,45	
8	4,0	-	7,9		•		28,42	7,39
10	5,0	-	9,9			•	28,42	
13	9,0	-	12,9			•	28,42	
16	12,0	-	15,9			•	28,42	
20	16,0	-	19,9			•	42,56	11,14
25	20,0	-	24,9			•	49,76	12,95
32	27,0	-	31,9			•	56,93	14,83
38	33,0	-	37,9			•	56,93	

L2 max is 7 times size b, however never longer than 40 mm.

Punches with Key flats against extra charge.

Without detailed specifications the locking is parallel to the major key flat axis of surface 'a'.

Punches ISO 8020 / Type K



Material: HSS (1.3343)
 Hardness: Shaft: 64 ±2 HRC
 Head: 50 ±5 HRC

d ₁ m5	Type K		ISO 8020 A		r +0.1 0	l ₁ +0.5 +0.2				
	d ₂ 0 -0.15	k +0.2 +0.1	d ₂ 0 -0.15	k +0.2 +0.1		63/71	80	90	100	120
3	5	3	5	3	0.2	7,79	8,53	9,75		
4	6	3	6	3		7,79	8,53	9,75	10,90	
5	8	5	8	5	0.3	7,79	8,60	9,48	10,36	11,87
6	9	5	9	5		8,93	9,89	10,83	11,92	13,60
8	11	5	11	5		10,56	11,65	12,79	14,08	16,12
10	13	5	13	5		12,38	13,61	14,96	16,45	18,83
13	16	5	16	5	0.4	15,64	17,20	18,89	20,79	23,73
16	19	6	19	5		19,22	21,12	23,29	25,59	29,27
20	24	6	23	5		23,36	25,65	28,22	31,00	35,53
25	29	10	28	5		28,97	31,89	35,07	38,59	44,17
32	36	12	35	5		38,38	42,24	46,44	51,11	58,47
38	45	15	41	5		47,32	52,06	57,27	62,95	72,15

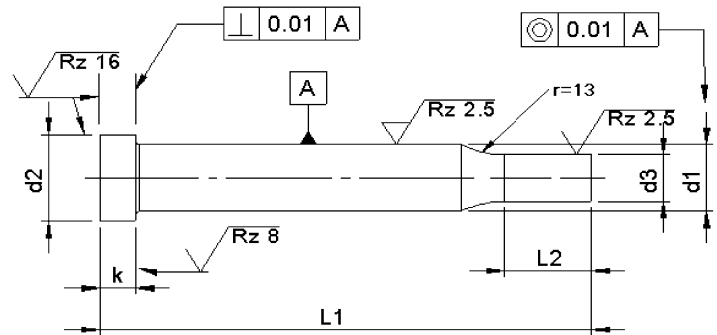
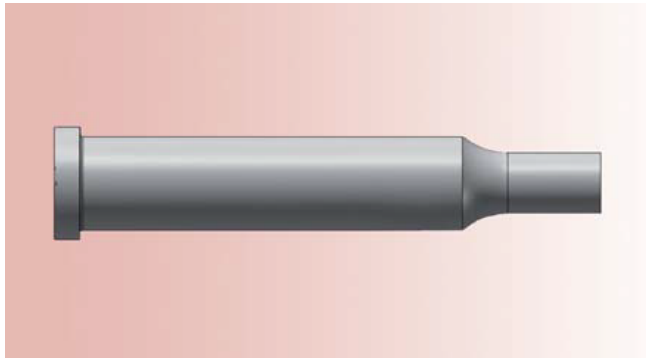
Intermediate diameters, other lengths and special materials e.g. ASP, CPM and Vanadis, are available on request.

Extra charges and discounts:

- 1 Piece per dimension + 50%
- 2-3 Pieces per dimension + 25%
- 25 Pieces per dimension – 5%
- 50 Pieces per dimension – 7%
- 100 Pieces per dimension – 10%

Punches ISO 8020 B / type KP

With reduced shaft 'Round'



Material: HSS (1.3343)
Hardness: Shaft: 64 ±2 HRC
Head: 50 ±5 HRC

d ₁ m5	d ₃ j6		l ₂ +0.5 0	l ₁ +0.5 +0.2					
	≥	≤		63/71	80	90	100	120	
Price by piece in EUROS									
3	1.6	– 2.9	7	11,17	11,91	13,13			
4	1.6	– 3.9	10	11,17	11,91	13,13	14,28		
5	2.5	– 4.9	10	11,51	12,32	13,20	14,08	16,18	
6	3.0	– 5.9	10	13,27	14,22	15,16	16,25	18,62	
8	4.0	– 7.9	13	15,64	16,72	17,87	19,16	22,00	
10	5.0	– 9.9	17	18,41	19,63	20,99	22,48	25,79	
13	9.0	– 12.9	17	22,41	24,10	25,79	27,69	31,82	
16	12.0	– 15.9	17	28,64	30,53	32,63	35,00	40,08	
20	16.0	– 19.9	17	36,35	38,72	41,30	44,07	50,37	
25	20.0	– 24.9	17	45,83	48,74	51,92	55,44	63,23	
32	27.0	– 31.9	17	59,64	63,50	67,70	72,37	82,66	
38	33.0	– 37.9	17	70,41	75,14	80,36	86,04	119,01	

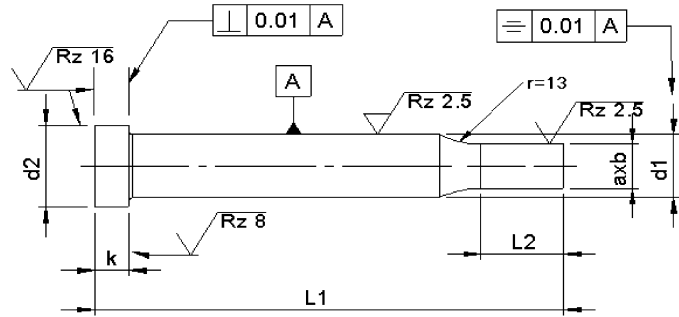
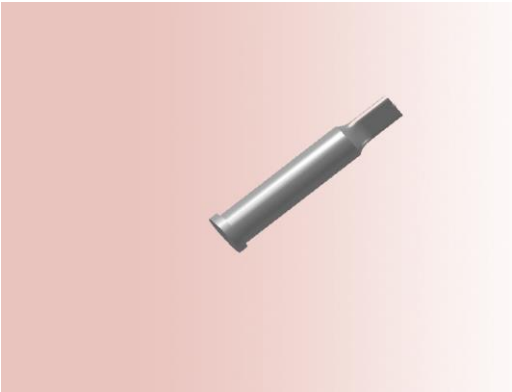
Intermediate diameters, other lengths and special materials e.g. ASP, CPM and Vanadis, are available on request.

Extra charges and discounts:

- 1 Piece per dimension + 50%
- 2-3 Pieces per dimension + 25%
- 25 Pieces per dimension – 5%
- 50 Pieces per dimension – 7%
- 100 Pieces per dimension – 10%

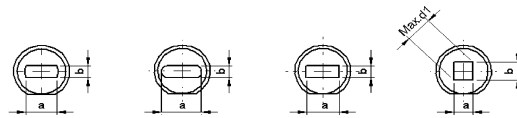
Punches ISO 8020.. / type K..

With reduced shaft 'Form'



Material: HSS (1.3343)
 Hardness: Shaft: 64 ±2 HRC
 Head: 50 ±5 HRC

type..F type..O type..R type..S



d ₁	AxB		l ₂	l ₁					
	± 0,01			63/71	80	90	100	120	Key flat
m5	B ≥	A ≤		Price by piece in EUROS					
3	1.6	2.9	7	30,26	31,10	31,95	32,93		6,41
4	1.6	3.9	10	30,26	31,10	31,95	32,93		
5	2.5	4.9	10	30,26	31,10	31,95	32,93	35,12	
6	3.0	5.9	10	31,46	32,44	33,43	34,55	37,02	8,56
8	4.0	7.9	13	40,53	41,66	42,86	44,19	47,15	
10	5.0	9.9	17	42,43	43,70	45,11	46,66	50,10	
13	9.0	12.9	17	45,81	47,43	49,19	51,16	55,45	
16	12.0	15.9	17	49,54	51,51	53,76	56,16	61,50	
20	16.0	19.9	17	68,61	71,00	73,68	76,56	83,11	11,71
25	20.0	24.9	17	81,84	84,87	88,18	91,83	99,93	13,60
32	27.0	31.9	17	99,01	103,02	107,39	112,24	120,12	15,44
38	33.0	37.9	17	108,30	113,23	118,65	124,56	137,93	

Punches with key-flats against surcharge.

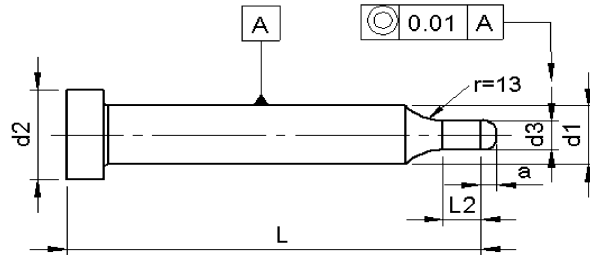
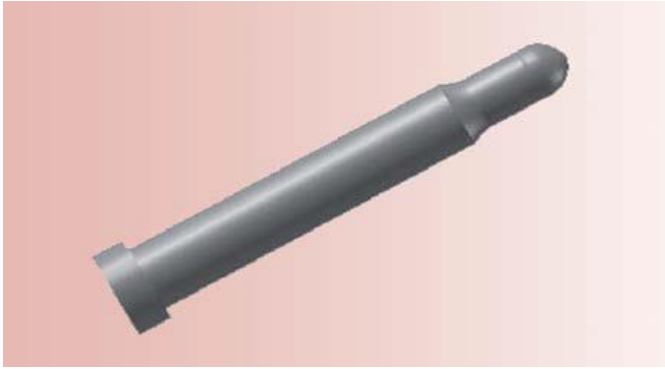
Without detailed specification the key-flat is parallel to the major axis of surface a.

Intermediate diameters, other lengths and special materials e.g. ASP, CPM and Vanadis, are available on request. See page 2 for extra charges and discount.

Extra charges and discounts:

- 1 Piece per dimension + 50%
- 2-3 Pieces per dimension + 25%
- 25 Pieces per dimension – 5%
- 50 Pieces per dimension – 7%
- 100 Pieces per dimension – 10%

Punches ISO 8020 / type KPL With pilots



Material: HSS (1.3343)
Hardness: Shaft: 64 ±2 HRC
Head: 50 ±5 HRC

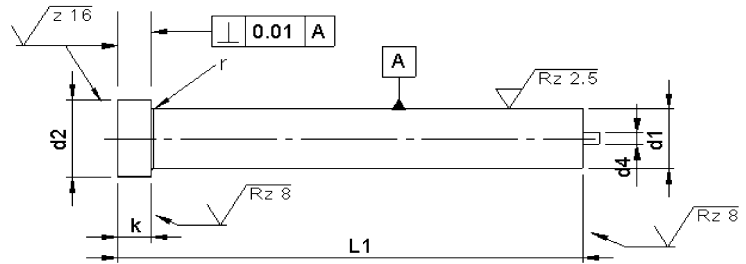
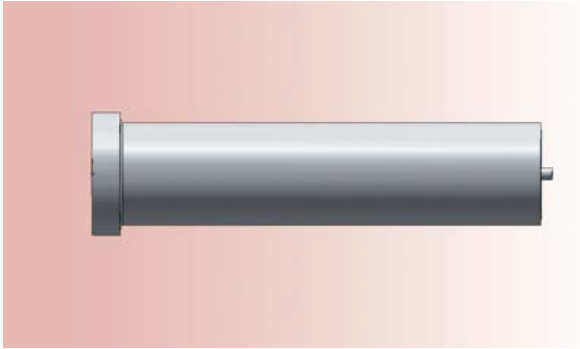
d ₁	d ₃			a	l ₂	l+a				
	+0.01 0					63/71	80	90	100	120
m ₅	≥	-	≤	Price by piece in EUROS						
5	0.8	-	2.0	3.0	10	15,23	16,05	16,93	17,80	19,90
6	2.1	-	4.5	4.5	10	17,60	18,55	19,50	20,58	22,95
8	4.6	-	7.5	6.5	13	20,71	21,79	22,94	24,23	27,08
10	7.6	-	10.0	8.0	17	24,44	25,65	27,01	28,51	31,82
13	10.1	-	13.0	9.5	17	29,31	31,00	32,70	34,59	38,72
16	13.1	-	16.0	11.5	17	38,05	39,95	42,04	44,41	49,49
20	16.1	-	20.0	13.5	17	49,42	51,79	54,37	57,13	63,43
25	20.1	-	25.0	13.5	17	62,68	66,41	68,78	72,30	80,09

Intermediate diameters, other lengths and special materials e.g. ASP, CPM and Vanadis, are available on request.

Extra charges and discounts:

- 1 Piece per dimension + 50%
- 2-3 Pieces per dimension + 25%
- 25 Pieces per dimension - 5%
- 50 Pieces per dimension - 7%
- 100 Pieces per dimension - 10%

Punches ISO 8020 E / Type EK With ejector



Material: HSS (1.3343)
Hardness: Shaft: 64 ±2 HRC
Head: 50 ±5 HRC

d ₁	d ₂	d ₄	k	r	l ₁				
					63/71	80	90	100	120
m ₅	0 -0.15		+0.2 +0.1	+0.1 0	Price by piece in EUROS				
5	8	1	5	0.3	22,01	24,23	26,67	29,32	
6	9		5		21,73	23,97	26,34	28,97	
8	11	1,5	5		21,93	24,17	26,54	29,25	35,07
10	13		5		23,76	26,13	28,71	31,62	37,91
13	16	2,3	5	0.5	27,01	29,66	32,63	35,88	43,05
16	19		5		30,59	33,65	37,03	40,76	48,87
20	23	5	34,73		38,18	41,97	46,17	55,44	
25	28	5	40,35		44,41	48,81	53,68	64,45	
32	35	3	5	51,05	55,04	59,50	69,19	72,84	
38	41		5	58,83	63,83	68,78	74,54	87,13	

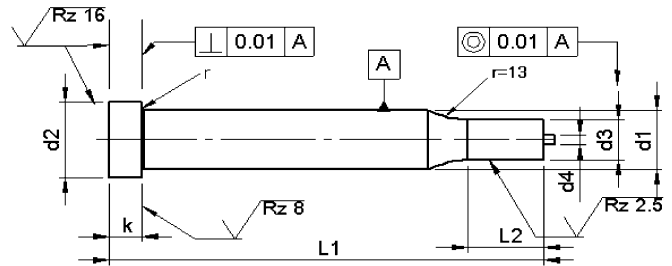
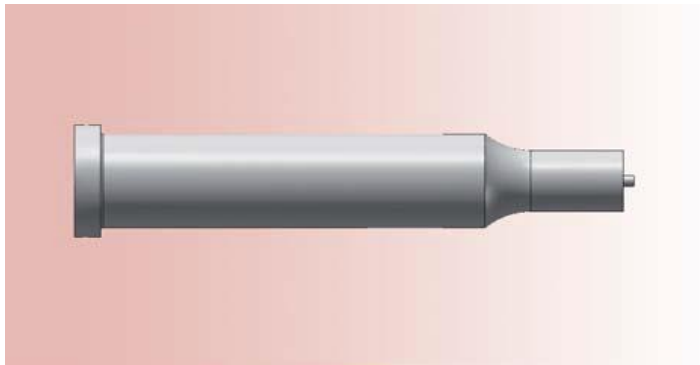
Intermediate diameters, other lengths and special materials e.g. ASP, CPM and Vanadis, are available on request.

Extra charges and discounts:

- 1 Piece per dimension + 50%
- 2-3 Pieces per dimension + 25%
- 25 Pieces per dimension – 5%
- 50 Pieces per dimension – 7%
- 100 Pieces per dimension – 10%

Punches ISO 8020 F / Typ EKP

With ejector with reduced shaft 'Round'



Material: HSS (1.3343)
 Hardness: Shaft: 64 ±2 HRC
 Head: 50 ±5 HRC

d ₁ m ₅	≥	d ₃ j ₆ -	≤	l ₂	l ₁ +0,5 +0,2				
					63/71	80	90	100	120
Price by piece in EUROS									
5	2.5	-	4.9	10	25,39	27,96	30,39	33,04	
6	3.0	-	5.9	10	26,14	28,30	30,66	33,31	
8	4.0	-	7.9	13	27,01	29,25	31,62	34,33	40,14
10	5.0	-	9.9	17	29,79	32,16	34,73	37,64	43,93
13	9.0	-	12.9	17	33,91	36,56	39,54	42,79	49,97
16	12.0	-	15.9	17	40,01	43,06	46,45	50,16	58,28
20	16.0	-	19.9	17	47,80	51,24	55,04	59,24	68,51
25	20.0	-	24.9	17	57,20	61,26	65,67	69,85	81,30
32	24.0	-	31.9	17	71,22	75,01	79,28	83,88	94,17
38	28.0	-	37.9	17	81,99	86,99	91,94	97,69	110,48

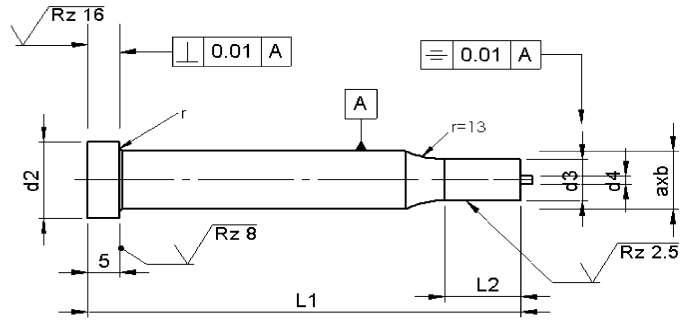
Intermediate diameters, other lengths and special materials e.g. ASP, CPM and Vanadis, are available on request.

Extra charges and discounts:

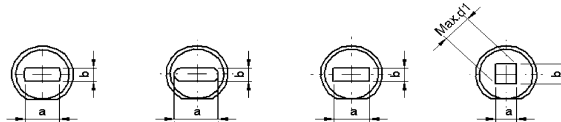
- 1 Piece per dimension + 50%
- 2-3 Pieces per dimension + 25%
- 25 Pieces per dimension - 5%
- 50 Pieces per dimension - 7%
- 100 Pieces per dimension - 10%

Punches ISO 8020 E / Typ EK..

With ejector with reduced shaft 'Form'



type..F type..O type..R type..S



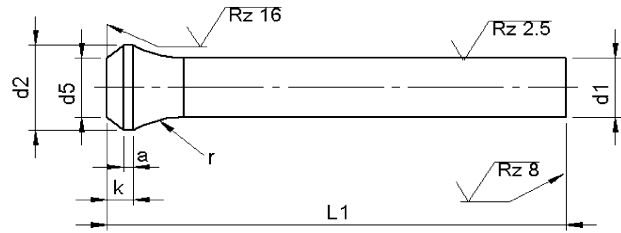
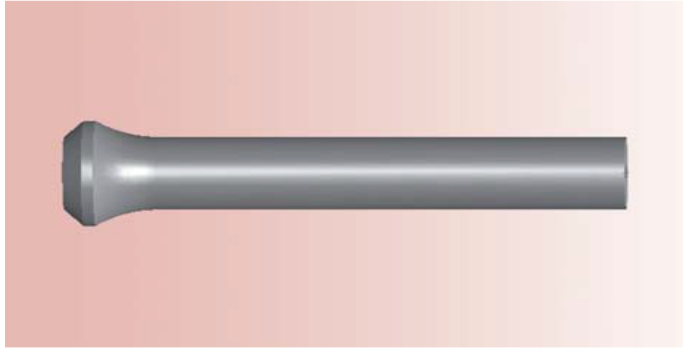
Material: HSS (1.3343)
 Hardness: Shaft: 64 ±2 HRC
 Head: 50 ±5 HRC

d ₁	AxB ± 0.01		l ₂	l ₁					
	B ≥	A ≤		63/71	80	90	100	120	Key flat
Price by piece in EUROS									
5	2.5	- 4.9	10	43,33	45,56	48,00	50,64		6,41
6	3.0	- 5.9	10	43,06	45,29	47,66	50,30		
8	4.0	- 7.9	13	50,37	52,60	54,97	57,68	63,50	8,56
10	5.0	- 9.9	17	52,20	54,56	57,14	60,05	66,34	
13	9.0	- 12.9	17	55,44	58,08	61,06	64,31	71,49	
16	12.0	- 15.9	17	59,03	62,08	65,46	69,19	77,31	11,71
20	16.0	- 19.9	17	77,38	80,83	84,62	88,82	98,09	
25	20.0	- 24.9	17	90,11	94,17	98,64	103,51	114,21	13,60
32	24.0	- 31.9	17	107,98	111,90	116,37	126,05	129,71	
38	28.0	- 37.9	17	115,76	120,71	125,65	131,54	143,99	15,44

Punches with key-flats against surcharge.
 Without detailed specification the key-flat is parallel to the major axis of surface a.
 Intermediate diameters, other lengths and special materials e.g. ASP, CPM and Vanadis, are available

Extra charges and discounts:
 1 Piece per dimension + 50%
 2-3 Pieces per dimension + 25%
 25 Pieces per dimension - 5%
 50 Pieces per dimension - 7%
 100 Pieces per dimension - 10%

Punches with bottle neck type P

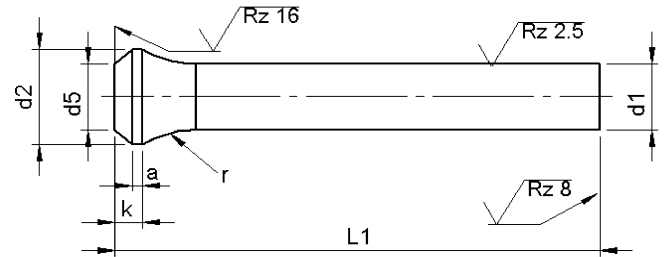
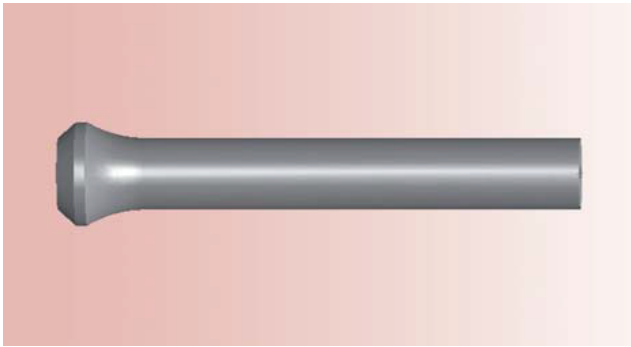


Material: HSS (1.3343)
 Hardness: Shaft: 64 ±2 HRC
 Head: 50 ±5 HRC

d ₁ h ₆	d ₂ 0 -0.2	k +0.2 0	a	d ₅	r 0 -0.2	l ₁ +0.5 0				
						71	80	90	100	120
						Price by piece in EUROS				
5,0	7,0	4,0	1,5	d1 ± 0,1	10,0	7,79	8,60	9,48	10,36	12,46
5,5	8,0					8,33	9,21	10,16	11,10	13,23
6,0	9,0					8,93	9,89	10,83	11,92	14,29
6,5	10,0					9,35	10,29	11,31	12,46	14,90
7,0	10,0					9,75	10,69	11,78	13,00	15,57
7,5	11,0					10,16	11,10	12,25	13,54	16,24
8,0	11,0				10,56	11,65	12,79	14,08	16,93	
8,5	13,0				11,04	12,12	13,34	14,69	17,60	
9,0	13,0				11,50	12,59	13,88	15,09	18,28	
9,5	14,0				11,98	13,07	14,42	15,70	18,95	
10,0	14,0				12,38	13,61	14,96	16,45	19,77	
10,5	15,0				12,94	14,28	15,64	17,16	20,62	
11,0	15,0				13,48	14,96	16,32	17,89	21,47	
11,5	16,0				14,01	15,64	16,99	18,61	22,33	
12,0	16,0				14,42	16,32	17,66	19,32	23,18	
12,5	17,0				15,03	16,32	18,35	20,04	24,03	
13,0	17,0				15,64	17,20	18,89	20,79	24,92	
13,5	18,0				16,24	17,85	19,56	21,60	25,86	
14,0	18,0	16,86	18,50	20,24	22,41	26,80				
14,5	19,0	17,47	19,15	20,92	23,23	27,76				

Intermediate diameters, other lengths and special materials e.g. ASP, CPM and Vanadis, are available on request.

Punches with bottle neck type P



Material: HSS (1.3343)
 Hardness: Shaft: 64 ±2 HRC
 Head: 50 ±5 HRC

d ₁ h ₆	d ₂ 0 -0.2	k +0.2 0	a	d ₅	r 0 -0.2	l ₁ +0.5 0				
						71	80	90	100	120
Price by piece in EUROS										
15,0	19,0	4.0	1.5	d1 ± 0.1	15.0	18,08	19,80	21,87	24,03	28,70
15.5	20.0					18,68	20,45	22,54	24,84	29,79
16,0	20.0					19,22	21,12	23,29	25,59	30,74
16.5	21.0					19,73	21,68	23,90	26,26	31,54
17,0	21.0					20,25	22,33	24,51	26,94	32,36
17.5	22.0					20,76	22,98	25,11	27,62	33,17
18,0	22.0					21,28	23,63	25,73	28,30	32,63
18.5	23.0					21,79	24,28	26,34	28,97	33,44
19,0	23.0					22,31	24,93	26,94	29,66	34,25
19.5	25.0					22,96	25,57	27,55	30,33	35,07
20,0	25.0					23,35	25,66	28,22	31,02	37,30

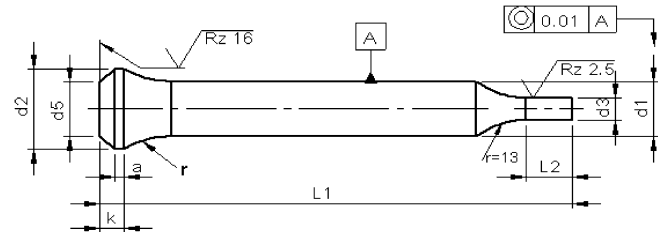
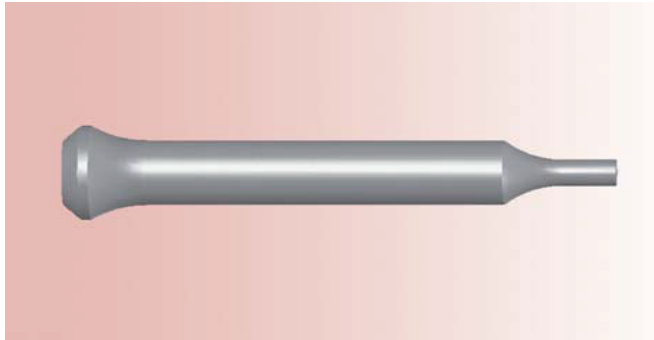
Intermediate diameters, other lengths and special materials e.g. ASP, CPM and Vanadis, are available on request.

Extra charges and discounts:

- 1 Piece per dimension + 50%
- 2-3 Pieces per dimension + 25%
- 25 Pieces per dimension – 5%
- 50 Pieces per dimension – 7%
- 100 Pieces per dimension – 10%

Punches with bottle neck type PP

With reduced shaft 'Round'



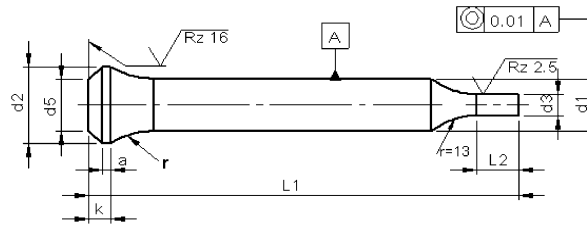
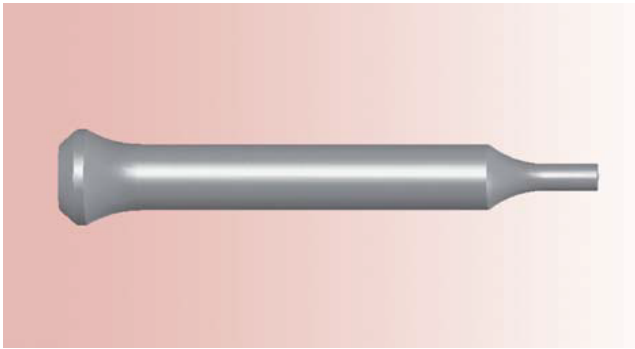
Material: HSS (1.3343)
Hardness: Shaft: 64 ±2 HRC
Head: 50 ±5 HRC

d ₁ h6	d ₃ h6		l ₂ +0.5 +0.0	l ₁ +0.5 0				
	≥	≤		71	80	90	100	120
Price by piece in EUROS								
5,0	2,5	- 4,9	10	11,51	12,32	13,20	14,08	16,18
5,5	2,5	- 4,4		12,66	13,54	14,49	15,44	17,67
6,0	3,0	- 5,9		13,27	14,22	15,16	16,25	18,62
6,5	3,0	- 6,4		14,42	15,37	16,39	17,54	19,97
7,0	3,5	- 6,9		14,83	15,78	16,86	18,08	20,65
7,5	3,0	- 7,4		15,24	16,18	17,33	18,62	21,33
8,0	3,5	- 7,9	13	15,64	16,72	17,88	19,16	22,01
8,5	4,0	- 8,4		17,06	18,14	19,36	20,71	23,62
9,0	4,0	- 8,9		17,53	18,61	19,90	21,12	24,30
9,5	4,5	- 9,4		18,00	19,09	20,44	21,73	24,98
10,0	5,0	- 9,9	17	18,41	19,63	20,98	22,47	25,79
10,5	5,5	- 10,4		19,84	21,20	22,55	24,08	27,53
11,0	5,5	- 10,9		20,38	21,87	23,23	24,80	28,39
11,5	6,0	- 11,4		20,93	22,55	23,90	25,52	29,24
12,0	6,0	- 11,9		21,33	23,23	24,58	26,23	30,09
12,5	7,0	- 12,4		21,94	23,23	25,26	26,95	30,94
13,0	9,0	- 12,9		22,55	24,11	25,80	27,69	31,82
13,5	9,0	- 13,4		25,66	27,26	28,98	31,01	35,27
14,0	9,5	- 13,9		26,27	27,91	29,65	31,82	36,22
14,5	9,5	- 14,4		26,88	28,56	30,33	32,63	37,17

Intermediate diameters, other lengths and special materials e.g. ASP, CPM and Vanadis, are available on request.

Punches with bottle neck type PP

With reduced shaft 'Round'



Material: HSS (1.3343)
Hardness: Shaft: 64 ±2 HRC
Head: 50 ±5 HRC

d ₁ h6	d ₃ h8		l ₂ +0.5 +0.0	l ₁ +0.5 0				
	≥	≤		71	80	90	100	120
				Price by piece in EUROS				
15,0	10,0	- 14,9	17	27,49	29,21	31,28	33,45	38,12
15,5	10,5	- 15,4		28,10	29,86	31,96	34,26	39,20
16,0	12,0	- 15,9		28,64	30,54	32,70	35,00	40,15
16,5	12,5	- 16,4		32,80	34,74	36,96	39,33	44,61
17,0	13,0	- 16,9		33,32	35,39	37,57	40,01	45,42
17,5	13,0	- 17,4		33,83	36,04	38,18	40,68	46,23
18,0	13,5	- 17,9		34,35	36,69	38,79	41,36	45,69
18,5	13,5	- 18,4		34,86	37,34	39,40	42,04	46,51
19,0	14,0	- 18,9		35,38	37,99	40,01	42,71	47,32
19,5	15,0	- 19,4		34,67	38,64	40,62	43,39	48,13
20,0	16,0	- 19,9		36,42	38,72	41,29	44,07	50,36
25,0	18,0	- 25,9		45,83	48,74	51,93	55,45	59,43

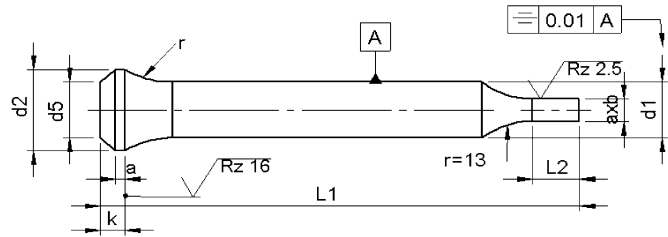
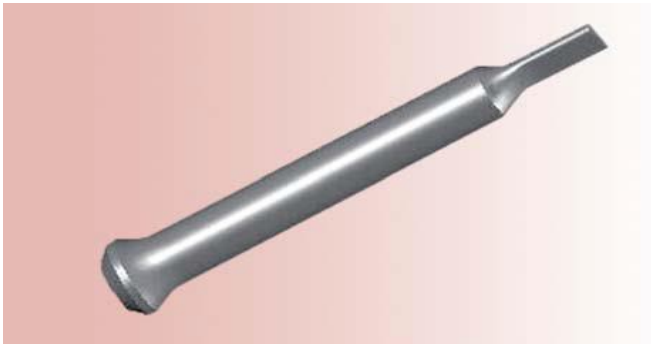
Intermediate diameters, other lengths and special materials e.g. ASP, CPM and Vanadis, are available on request.

Extra charges and discounts:

- 1 Piece per dimension + 50%
- 2-3 Pieces per dimension + 25%
- 25 Pieces per dimension - 5%
- 50 Pieces per dimension - 7%
- 100 Pieces per dimension - 10%

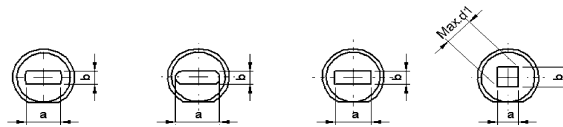
Punches with bottle neck type P..

With reduced shaft 'Form'



Material: HSS (1.3343)
 Hardness: Shaft: 64 ±2 HRC
 Head: 50 ±5 HRC

Type PF Type PO Type PR Type PS



d ₁	AxB ± 0,01			l ₂	l ₁ +0.5 0					key flat
	B	-	A		71	80	90	100	120	
h ₆	≥	-	≤	Price by piece in EUROS					8,14	
5	2,5	-	4,9	10	29,11	29,93	30,81	31,69		33,78
5.5	2,5	-	4,4		29,65	30,54	31,48	32,43		34,66
6	3,0	-	5,9		30,26	31,21	32,16	33,24		35,61
6.5	3,0	-	6,4		37,78	38,72	39,74	40,89		43,33
7	3,5	-	6,9		38,18	39,13	40,21	41,43		44,00
7.5	3,0	-	7,4		38,59	39,54	40,69	41,97		44,68
8	3,5	-	7,9	13	38,99	40,08	41,23	42,51		45,36
8.5	4,0	-	8,4		39,47	40,55	41,77	43,12		46,03
9	4,0	-	8,9		39,94	41,03	42,31	43,53		46,71
9.5	4,5	-	9,4		40,42	41,50	42,85	44,14		47,39
10	5,0	-	9,9		40,82	42,04	43,39	44,88		48,20
10.5	5,5	-	10,4		41,36	42,72	44,07	45,60		49,05
11	5,5	-	10,9	17	41,91	43,39	44,75	46,32		49,91
11.5	6,0	-	11,4		42,45	44,07	45,43	47,04		50,76
12	6,0	-	11,9		42,85	44,75	46,10	47,75		51,61
12.5	7,0	-	12,4		43,46	44,75	46,78	48,47		52,47
13	9,0	-	12,9		44,07	45,63	47,32	49,22		53,35
13.5	9,0	-	13,4		44,68	46,28	48,00	50,03		54,29
14	9,5	-	13,9		45,29	46,93	48,67	50,84		55,24
14.5	9,5	-	14,4		45,90	47,58	49,35	51,65	56,19	

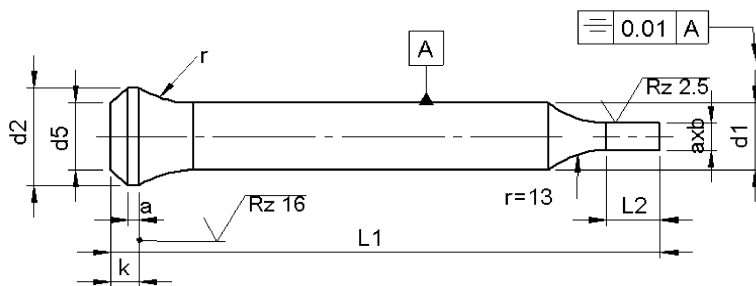
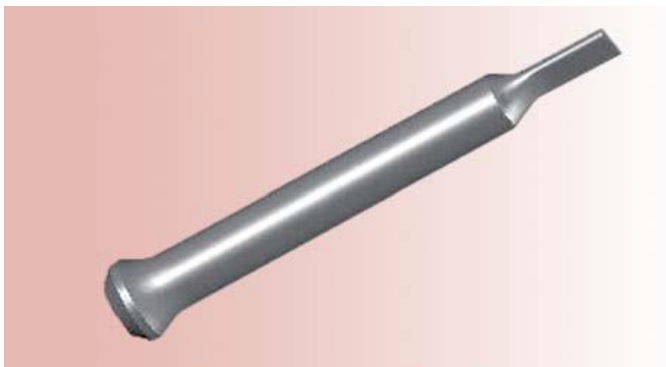
Punches with key-flats against surcharge.

Without detailed specification the key-flat is parallel to the major axis of surface a.

Intermediate diameters, other lengths and special materials e.g. ASP, CPM and Vanadis, are available on request. See page 2 for extra charges and discount.

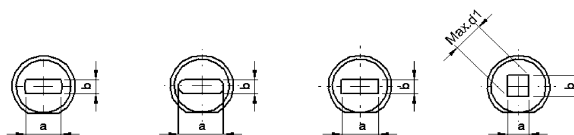
Punches with bottle neck type P..

With reduced shaft 'Form'



Material: HSS (1.3343)
Hardness: Shaft: 64 ±2 HRC
Head: 50 ±5 HRC

Type PF Type PO Type PR Type PS



d ₁ h ₆	d ₂	-	AxB ± 0,01		l ₂ +0.5 0	l ₁					Key flat
			B ≥	-		A ≤	71	80	90	100	
15	19.0	-	10,0	-	14,9	46,51	48,23	50,30	52,47	57,14	8,56
15.5	20.0	-	10,5	-	15,4	47,12	48,88	50,98	53,28	58,22	
16	20.0	-	12,0	-	15,9	47,66	49,55	51,72	54,02	59,17	
16.5	21.0	-	12,5	-	16,4	62,40	64,33	66,55	68,92	74,20	11,71
17	21.0	-	13,0	-	16,9	62,91	64,98	67,16	69,60	75,02	
17.5	22.0	-	13,0	-	17,4	63,43	65,63	67,77	70,28	75,83	
18	22.0	-	13,5	-	17,9	63,94	66,28	68,38	70,95	75,29	
18.5	23.0	-	13,5	-	18,4	64,45	66,93	68,99	71,63	76,10	
19	23.0	-	14,0	-	18,9	64,97	67,58	69,60	72,31	76,91	
19.5	25.0	-	15,0	-	19,4	65,61	68,23	70,21	72,98	77,72	
20	25.0	-	16,0	-	19,9	66,01	68,31	70,89	73,66	79,96	
25	25.0	-	18,0	-	24,9	78,74	81,65	84,84	88,36	96,13	13,60

Punches with key-flats against surcharge.

Without detailed specification the key-flat is parallel to the major axis of surface a.

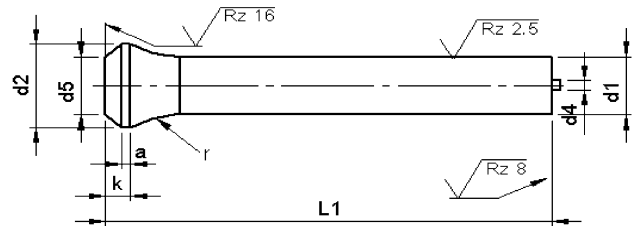
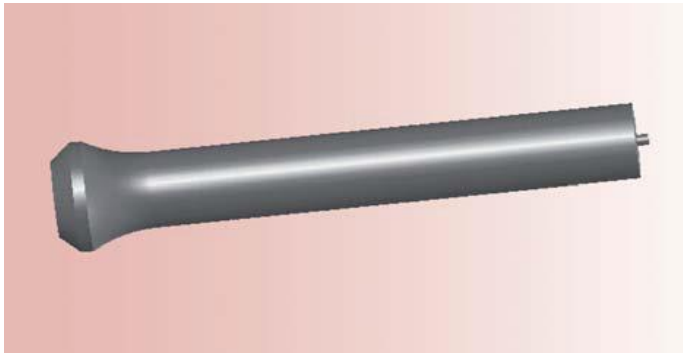
Intermediate diameters, other lengths and special materials e.g. ASP, CPM and Vanadis, are available on request.

Extra charges and discounts:

- 1 Piece per dimension + 50%
- 2-3 Pieces per dimension + 25%
- 25 Pieces per dimension – 5%
- 50 Pieces per dimension – 7%
- 100 Pieces per dimension – 10%

Punches with bottle neck type EP

With ejector



Material: HSS (1.3343)
 Hardness: Shaft: 64 ±2 HRC
 Head: 50 ±5 HRC

d ₁	d ₂	k	a	d ₅	r	d ₄	l ₁				
							71	80	90	100	120
h ₆		+0.2 0	+0.2 0				Price by piece in EUROS				
5	9	4	1.5	d1 ± 0.1	10	1	25,87	28,53	31,35	34,49	
6	10						26,19	28,85	31,75	34,90	
8	11				26,11	28,77	31,59	34,82	41,75		
10	14				1.5	2.3	28,29	31,11	34,17	37,64	45,13
13	17						32,16	35,30	38,85	42,71	51,26
16	20				36,43	40,05	44,08	48,52	58,19		
20	25				41,34	45,45	49,97	54,96	66,01		
25	31				47,78	52,15	56,54	61,42	74,76		

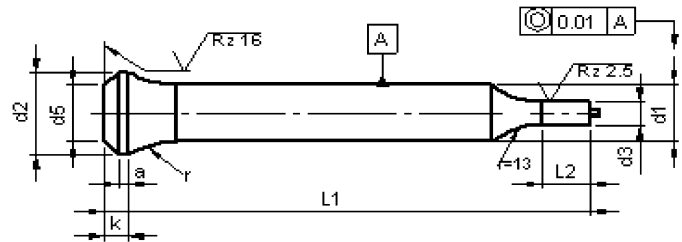
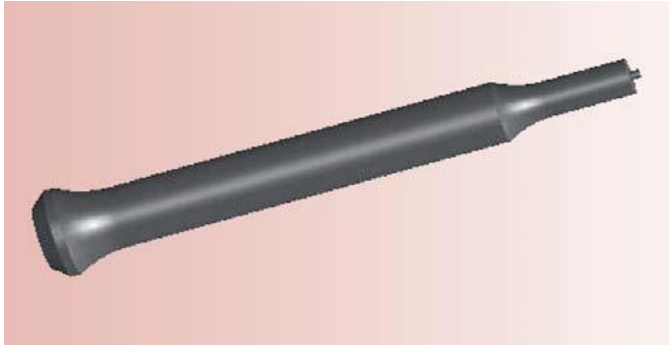
Intermediate diameters, other lengths and special materials e.g. ASP, CPM and Vanadis, are available on request.

Extra charges and discounts:

- 1 Piece per dimension + 50%
- 2-3 Pieces per dimension + 25%
- 25 Pieces per dimension – 5%
- 50 Pieces per dimension – 7%
- 100 Pieces per dimension – 10%

Punches with bottle neck type EPP

With ejector and reduced shaft 'Round'



Material: HSS (1.3343)
Hardness: Shaft: 64 ±2 HRC
Head: 50 ±5 HRC

d ₁	d ₂	d ₃		l ₂	l ₁				
		≥	≤		71	80	90	100	120
5	9	3,0	4,9	10	+0.5 0				
6	10	3,0	5,9		Price by piece in EUROS				
8	11	3,5	7,9	13	32,22	35,00	37,96	41,32	48,47
10	14	5,0	9,9	17	35,42	38,39	41,55	45,16	52,96
13	17	9,0	12,9		39,07	45,98	45,76	49,63	58,17
16	20	12,0	15,9		47,32	51,06	55,25	59,90	69,95
20	25	16,0	19,9		56,07	60,32	65,03	70,25	81,73
25	31	18	25,9		64,63	69,00	73,40	78,27	91,62

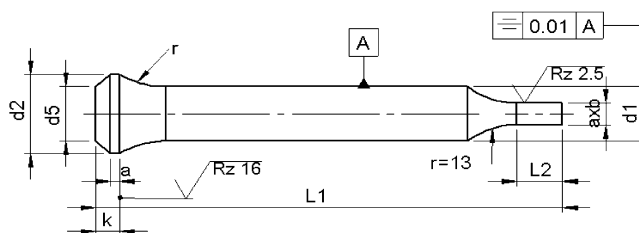
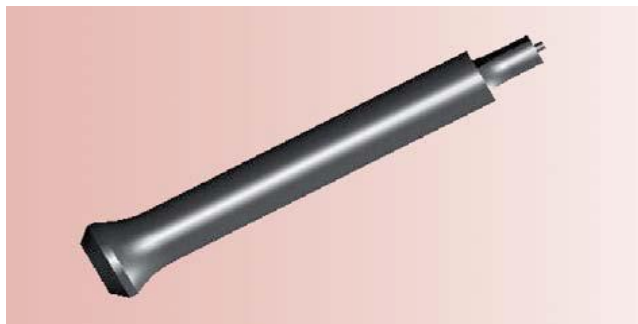
Intermediate diameters, other lengths and special materials e.g. ASP, CPM and Vanadis, are available on request

Extra charges and discounts:

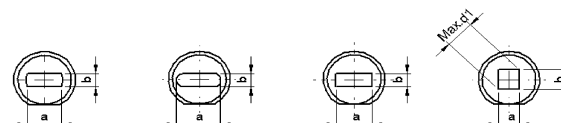
- 1 Pieces per dimension + 50%
- 2-3 Pieces per dimension + 25%
- 25 Pieces per dimension – 5%
- 50 Pieces per dimension – 7%
- 100 Pieces per dimension – 10%

Punches with bottle neck type EP..

With ejector with reduced shaft 'Form'



Type EPF Type EPO Type EPR Type EPS



Material: HSS (1.3343)
 Hardness: Shaft: 64 ±2 HRC
 Head: 50 ±5 HRC

d ₁	AxB ± 0,01		l ₂ +0.5 0	l ₁					
	B ≥	A ≤		63/71	80	90	100	120	Key flat
Price by piece in EUROS									
5	2.5	- 4.9	10	47,20	49,86	52,68	55,82		6,73
6	3.0	- 5.9		47,52	50,19	53,09	56,22		
8	4.0	- 7.9	17	54,55	57,20	60,03	63,25	70,19	8,99
10	5.0	- 9.9		56,61	59,55	62,60	66,07	73,57	
13	9.0	- 12.9		60,59	63,74	67,29	71,15	79,69	
16	12.0	- 15.9		64,86	68,48	72,52	76,96	86,63	
20	16.0	- 19.9		84,00	89,85	94,62	99,84	108,67	
25	18	- 24,9		97,54	101,91	106,31	111,18	124,53	13,60

Punches with key-flats against surcharge.

Without detailed specification the key-flat is parallel to the major axis of surface a.

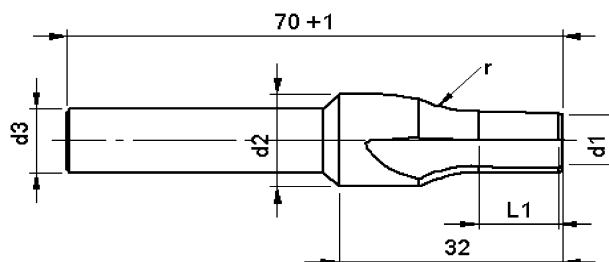
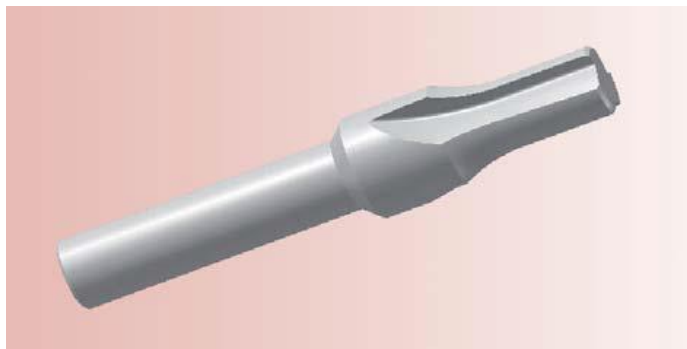
Intermediate diameters, other lengths and special materials e.g. ASP, CPM and Vanadis, are available on request

Extra charges and discounts:

- 1 Pieces per dimension + 50%
- 2-3 Pieces per dimension + 25%
- 25 Pieces per dimension – 5%
- 50 Pieces per dimension – 7%
- 100 Pieces per dimension – 10%

Posaunenhead-countersink

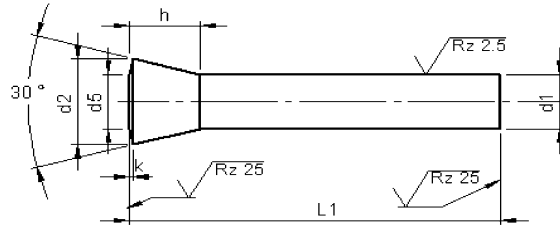
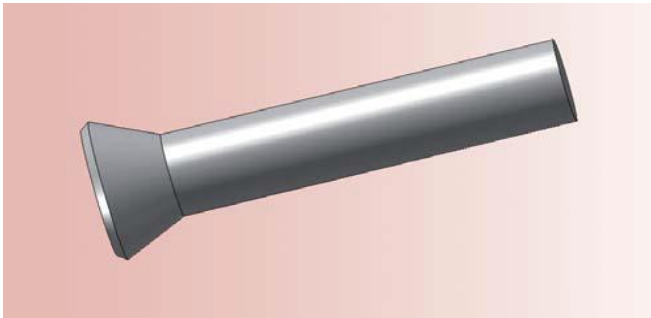
For punches with bottle neck



Material: HSS (1.3343)
 Hardness: Shaft: 64 ±2 HRC

d_1 f_7	d_2 h_8	d_3 h_{11}	r $+0.2$ 0	l_1	$X^*(d_1)$	Price by piece in EURO
5,0	7,4	=d2	10,0	10,0	0,1	48,36
5,5	8,5					53,51
6,0	9,5					58,67
6,5 - 7,0	10,5	10	12,0	0,1		62,54
7,5 - 8,0	11,5					67,70
8,5 - 9,0	13,5		78,66			
9,0	5,9		44,49			
4,5-4,9	6,4		48,36			
5,0-5,4	7,4		48,36			
5,5-5,9	8,5		53,51			
6,0	9,5		58,67			
6,5-7,0	10,5		62,54			
7,5-8,0	11,5		67,70			
8,5-9,0	13,5	78,66				
9,5 - 10,0	14,5	15,0	15,0	0,5	83,82	
10,5 - 11,0	15,5				83,82	
11,5 - 12,0	16,5				83,82	
12,5 - 13,0	17,5				101,87	
13,5 - 14,0	18,5				101,87	
14,5 - 15,0	19,5				101,87	
15,5 - 16,0	20,5				101,87	
16,5 - 17,0	21,5				114,76	
17,5 - 18,0	22,5				114,76	
18,5 - 19,0	23,5				114,76	
19,5 - 20,0	25,5	16,0	15,0	0,5	114,76	
25,0	30,5				122,50	

Punches with conical head 30°



Material: HSS (1.3343)
Hardness: Shaft: 64 ±2 HRC
Head: 50 ±5 HRC

d ₁ h ₆	d ₂ 0 -0.3	d ₅	h	k	l ₁ +1.0 0				
					71	80	90	100	120
Price by piece in EUROS									
4	6.6	3.8	6	1	7,79	8,53	9,75	10,90	0,00
5	8.2	5	7	1	7,79	8,60	9,48	10,36	12,46
6	9.7	6	8	1	8,94	9,88	10,83	11,91	14,28
7	11.8	7	10	1	10,56	11,64	12,79	14,08	16,92
8	12.8	8	10	1	12,39	13,61	14,96	16,45	19,77
9	14.4	9	11	1	14,01	15,23	16,59	18,08	21,39
10	15.9	10	12	1	15,64	17,20	18,89	20,78	24,91
11	17.4	11	13	1.5	17,40	18,96	19,29	22,54	26,67
12	18.7	12	14	1.5	19,23	21,12	23,29	25,59	30,73
13	20.2	13	15	1.5	20,58	22,48	24,64	26,94	32,09
14	21.8	14	16	1.5	22,00	24,03	26,00	28,30	33,44
15	23.3	15	17	1.5	23,36	25,66	28,23	31,01	37,30
16	24.6	16	18	2	24,71	27,01	29,58	32,36	38,65

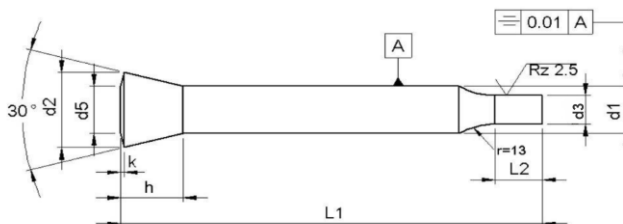
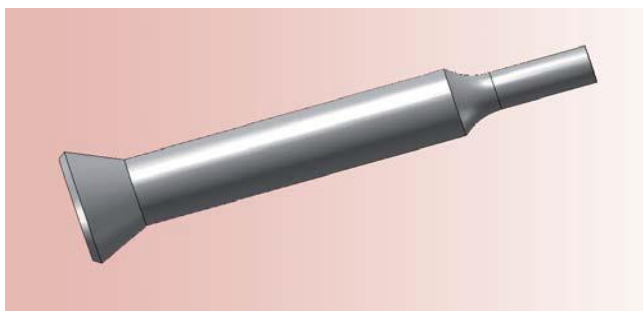
Intermediate diameters, other lengths and special materials e.g. ASP, CPM and Vanadis, are available on request.

Extra charges and discounts:

- 1 Pieces per dimension + 50%
- 2-3 Pieces per dimension + 25%
- 25 Pieces per dimension – 5%
- 50 Pieces per dimension – 7%
- 100 Pieces per dimension – 10%

Punches with conical head 30°

With reduced shaft 'Round'



Material: HSS (1.3343)
Hardness: Shaft: 64 ±2 HRC
Head: 50 ±5 HRC

d ₁	d ₃ h ₆			l ₂ +0,5 0,0	l ₁ +1.0 0				
					71	80	90	100	120
h ₆	≥	-	≤	Price by piece in EUROS					
4	1,6	-	3,9	10	11,17	11,91	13,13	14,28	
5	2,5	-	4,9	10	11,51	12,32	13,20	14,08	16,18
6	3,0	-	5,9	10	13,27	14,22	15,16	16,25	18,62
7	3,0	-	6,9	10	15,64	16,72	17,87	19,16	22,00
8	4,0	-	7,9	13	17,47	18,68	20,04	21,53	24,85
9	4,5	-	8,9	13	20,04	21,26	22,61	24,10	27,42
10	5,0	-	9,9	17	21,66	23,22	24,91	27,01	30,94
11	5,0	-	10,9	17	24,30	25,73	26,20	29,45	33,44
12	6,0	-	11,9	17	26,13	28,03	30,19	32,50	37,64
13	9,0	-	12,9	17	27,49	29,38	31,55	33,85	38,99
14	9,5	-	13,9	17	31,41	33,44	35,41	37,71	42,85
15	10,0	-	14,9	17	32,77	35,07	37,64	40,42	46,71
16	12,0	-	15,9	17	34,12	36,42	38,99	41,77	48,07

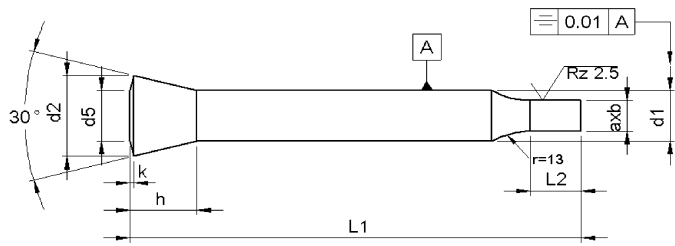
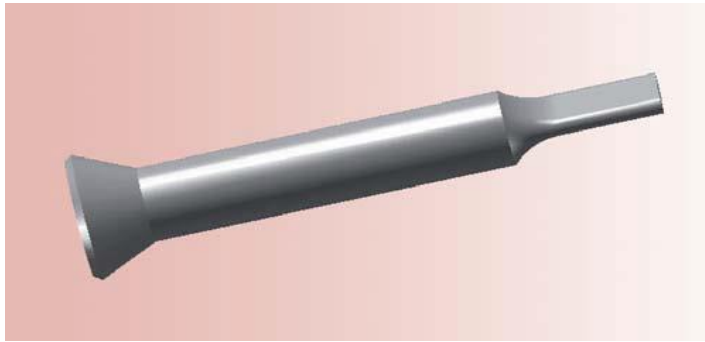
Intermediate diameters, other lengths and special materials e.g. ASP, CPM and Vanadis, are available on request.

Extra charges and discounts:

- 1 Pieces per dimension + 50%
- 2-3 Pieces per dimension + 25%
- 25 Pieces per dimension – 5%
- 50 Pieces per dimension – 7%
- 100 Pieces per dimension – 10%

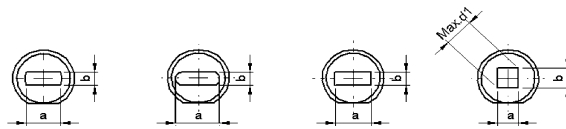
Punches with conical head 30°

With reduced shaft 'Form'



Type 30° F Type 30° O Type 30° R Type 30° S

Material: HSS (1.3343)
Hardness: Shaft: 64 ±2 HRC
Head: 50 ±5 HRC



d ₁	AxB ± 0.01		l ₂	l ₁ +1 0					
	B ≥	A ≤		71	80	90	100	120	Key flat
h ₆			+0,5 0	Price by piece in EUROS					
4	1,6	3,9	10	29,11	29,85	31,08	32,23		6,41
5	2,5	4,9		29,11	29,93	30,80	31,68	33,79	
6	3,0	5,9		30,26	31,21	32,16	33,23	35,61	
7	3,0	6,9		31,89	32,96	34,12	35,40	38,24	
8	4,0	7,9	13	40,82	42,04	43,39	44,88	48,20	8,56
9	4,5	8,9		42,45	43,66	45,02	46,51	49,82	
10	5,0	9,9	17	44,08	45,63	47,32	49,22	53,35	
11	5,0	10,9		45,83	47,38	47,73	50,97	55,10	
12	6,0	11,9		47,66	49,55	51,72	54,02	59,17	
13	9,0	12,9		49,01	50,91	53,08	55,38	60,53	
14	9,5	13,9		50,43	52,47	54,43	57,39	61,87	
15	10,0	14,9		51,79	54,10	56,67	59,44	65,73	
16	12,0	15,9		53,14	55,44	58,02	60,80	67,09	

Punches with key-flats against surcharge.

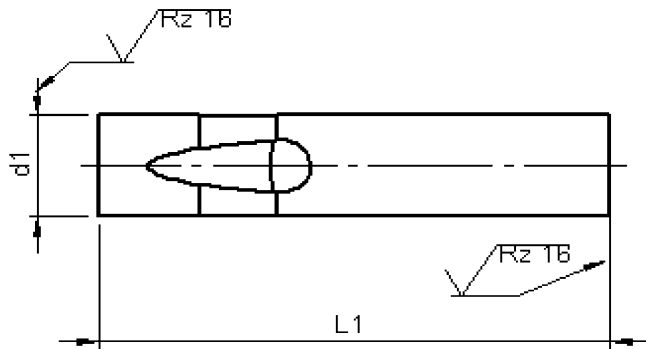
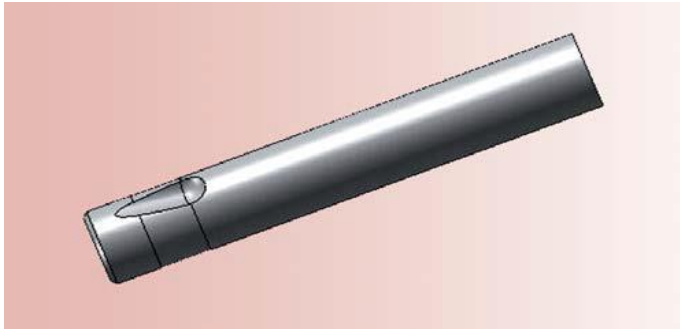
Without detailed specification the key-flat is parallel to the major axis of surface a.

Intermediate diameters, other lengths and special materials e.g. ASP, CPM and Vanadis, are available on request.

Extra charges and discounts:

- 1 Pieces per dimension + † + 50 %
- 2-3 Pieces per dimension · + 25 %
- 25 Pieces per dimension – - 5 %
- 50 Pieces per dimension – - 7 %
- 100 Pieces per dimension - 10 %

Ball-Lock punch type BT (Light Duty)
Ball-Lock punch type BHT (Heavy Duty)



Material: HSS (1.3343)
Hardness: Shaft: 64 ±2 HRC
Head: 50 ±5 HRC

d ₁ g _s	l ₁ +0,3 +0,1				
	63/71	80	90	100	125
	Price by piece in EUROS				
6	10,56	11,37	12,32	13,40	15,57
10	13,81	14,89	16,32	17,67	20,85
13	16,92	18,28	19,97	21,80	25,73
16	20,31	22,20	24,17	26,40	31,14
20	24,24	26,40	28,91	31,61	37,44
25	29,58	32,36	35,41	38,72	46,03

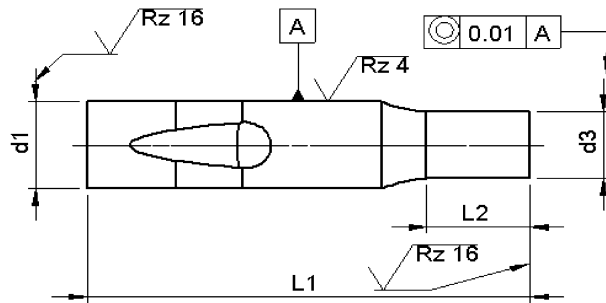
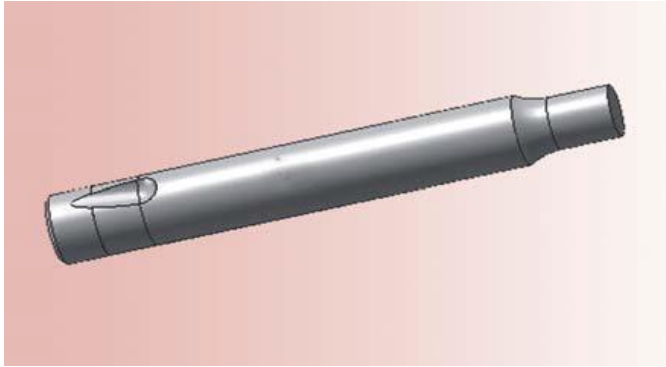
Intermediate diameters, other lengths and special materials e.g. ASP, CPM and Vanadis, are available on request

Extra charges and discounts:

- 1 Pieces per dimension + 50%
- 2-3 Pieces per dimension + 25%
- 25 Pieces per dimension – 5%
- 50 Pieces per dimension – 7%
- 100 Pieces per dimension – 10%

Ball-Lock punch type BTP (Light Duty) Ball-Lock punch type BHTP (Heavy Duty)

With reduced shaft 'Round'



Material: HSS (1.3343)
Hardness: Shaft: 64 ±2 HRC
Head: 50 ±5 HRC

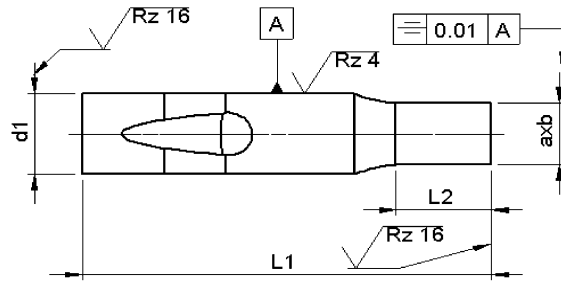
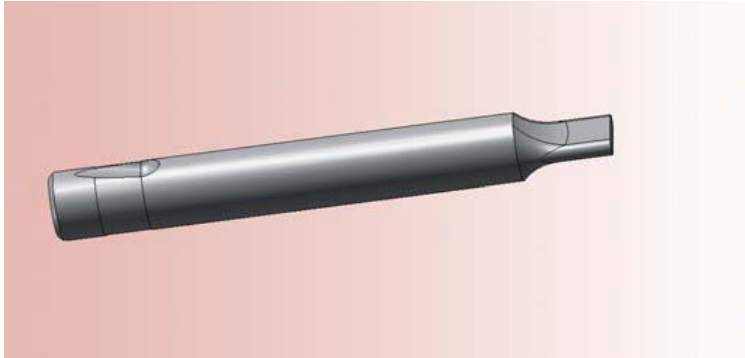
d ₁ g ₅	d ₃ +0.01 0			l ₂ +0,5 0	l ₁ +0.3 +0.2				
	≥	-	≤		63/71	80	93	100	125
Price by piece in EUROS									
6	3,0	-	5,9	10	14,89	15,70	16,65	17,73	19,90
10	5,0	-	9,9	17	19,83	20,92	22,34	23,69	26,87
13	9,0	-	12,9	17	23,83	25,18	26,87	28,70	32,63
16	12,0	-	15,9	17	29,72	31,61	33,57	35,81	40,55
20	16,0	-	19,9	17	37,30	39,46	41,97	44,68	50,50
25	20,0	-	24,9	17	46,44	49,21	52,26	55,57	62,88

Intermediate diameters, other lengths and special materials e.g. ASP, CPM and Vanadis, are available on request.

Extra charges and discounts:

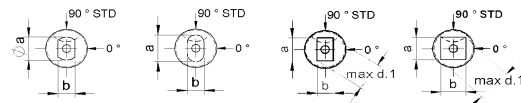
- 1 Pieces per dimension + 50%
- 2-3 Pieces per dimension + 25%
- 25 Pieces per dimension - 5%
- 50 Pieces per dimension - 7%
- 100 Pieces per dimension - 10%

Ball-Lock punch type BT.. (Light Duty)
Ball-Lock punch type BHT.. (Heavy Duty)
 With reduced shaft 'Form'



type BTF type BTO type BTR type BTS

Material: HSS (1.3343)
Hardness: Shaft: 64 ±2 HRC
Head: 50 ±5 HRC



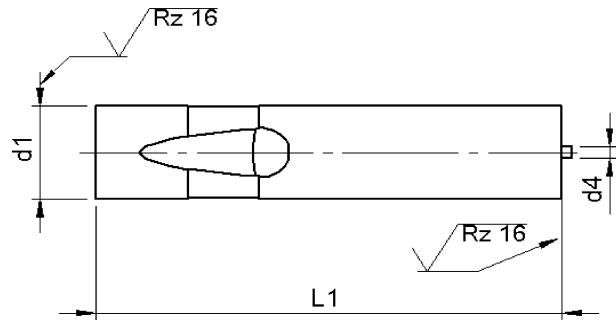
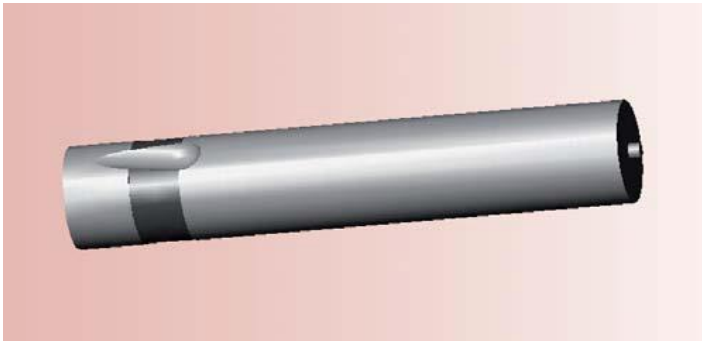
d ₁	AxB ± 0.01		l ₂ +0.5 0	l ₁ +0.2 +0.1				
				63/71	80	93	100	125
g ₅	B ≥	A ≤		Price by piece in EUROS				
6	3,0	5,9	10	31,88	32,69	33,64	34,73	36,89
10	5,0	9,9	17	42,24	43,32	45,35	46,10	49,28
13	9,0	12,9	17	45,35	46,71	48,40	50,23	54,15
16	12,0	15,9	17	48,74	50,63	52,60	54,83	59,57
20	16,0	19,9	17	66,88	69,04	71,55	74,26	80,08
25	20,0	24,9	17	79,33	82,11	85,15	88,47	95,78

Intermediate diameters, other lengths and special materials e.g. ASP, CPM and Vanadis, are available on request.

Extra charges and discounts:

- 1 Pieces per dimension + 50%
- 2-3 Pieces per dimension + 25%
- 25 Pieces per dimension – 5%
- 50 Pieces per dimension – 7%
- 100 Pieces per dimension – 10%

Ball-Lock punch type EB (Light Duty)
Ball-Lock punch type EBH (Heavy Duty)
 With ejector



Material: HSS (1.3343)
s: Shaft: 64 ±2 HRC
Head: 50 ±5 HRC

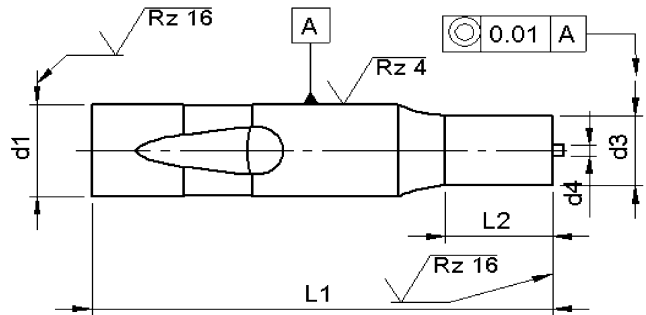
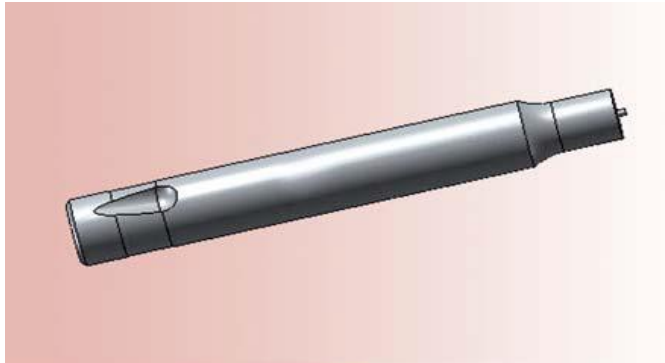
d ₁ g ₅	l ₁ +0.3 +0.2				
	63/71	80	93	100	125
Price by piece in EUROS					
6	24,10	24,91	25,86	26,94	29,11
10	27,35	28,43	29,85	31,21	34,39
13	30,46	31,82	33,51	35,34	39,26
16	33,85	35,74	37,71	39,94	44,68
20	37,78	39,94	42,45	45,15	50,98
25	43,12	45,90	48,95	52,26	59,57

Intermediate diameters, other lengths and special materials e.g. ASP, CPM and Vanadis, are available on request.

Extra charges and discounts:

- 1 Pieces per dimension + 50%
- 2-3 Pieces per dimension + 25%
- 25 Pieces per dimension – 5%
- 50 Pieces per dimension – 7%
- 100 Pieces per dimension – 10%

Ball-Lock punch type EBTP (Light Duty)
Ball-Lock punch type EBHTP (Heavy Duty)
 With ejector with reduced shaft 'Round'



Material: HSS (1.3343)
 Hardness: Shaft: 64 ±2 HRC
 Head: 50 ±5 HRC

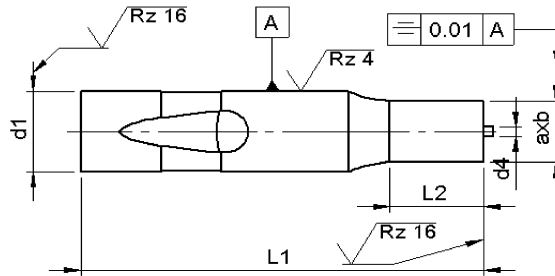
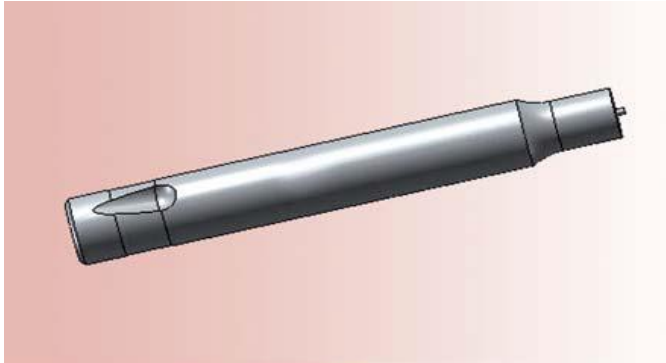
d ₁ g ₆	d ₃ +0.01 0		l ₂ +0.5 0	l ₁ +0.3 +0.2				
	≥	≤		63/71	80	93	100	125
Price by piece in EUROS								
6	3,0	– 5,9	10	28,43	29,25	30,19	31,55	33,44
10	5,0	– 9,9	17	33,38	34,46	35,88	37,23	40,42
13	9,0	– 12,9	17	37,37	38,72	40,42	43,60	46,17
16	12,0	– 15,9	17	44,61	45,15	47,12	49,35	54,09
20	16,0	– 19,9	17	64,38	53,01	55,51	58,22	64,04
25	20,0	– 24,9	17	72,21	62,76	65,80	69,12	76,43

Intermediate diameters, other lengths and special materials e.g. ASP, CPM and Vanadis, are available on request.

Extra charges and discounts:

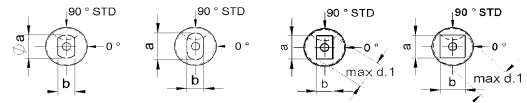
- 1 Pieces per dimension + 50%
- 2-3 Pieces per dimension + 25%
- 25 Pieces per dimension – 5%
- 50 Pieces per dimension – 7%
- 100 Pieces per dimension – 10%

Ball-Lock punch type EBT.. (Light Duty)
Ball-Lock punch type EBHT.. (Heavy Duty)
 With ejector with reduced shaft 'Form'



type EBTf type EBTO type EBTR type EBTS

Material: HSS (1.3343)
Hardness: Shaft: 64 ±2 HRC
Head: 50 ±5 HRC



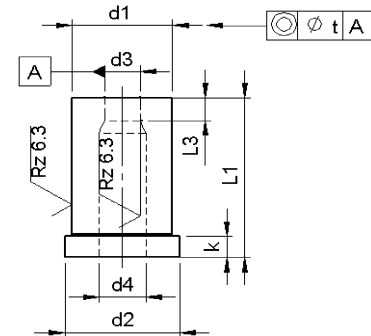
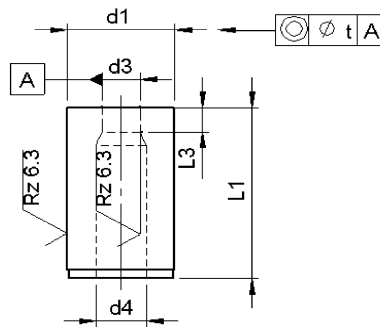
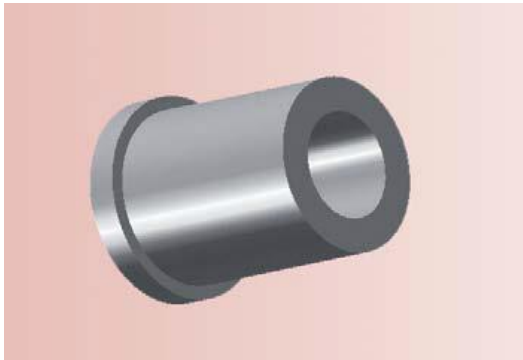
d ₁ g ₅	AxB +0.01 0		l ₂	l ₁ +0.2 +0.1				
	B ≥	A ≤		63/71	80	93	100	125
Price by piece in EUROS								
6	3,0	5,9	10	45,42	46,23	47,18	48,26	50,43
10	5,0	9,9	17	55,78	56,86	58,89	59,64	62,82
13	9,0	12,9	17	58,89	60,24	61,94	63,76	67,69
16	12,0	15,9	17	62,28	64,17	66,13	68,37	73,11
20	16,0	19,9	17	80,42	82,58	85,09	87,79	93,62
25	20,0	24,9	17	92,87	95,65	98,69	102,01	109,32

Intermediate diameters, other lengths and special materials e.g. ASP, CPM and Vanadis, are available on request.

Extra charges and discounts:

- 1 Pieces per dimension + 50%
- 2-3 Pieces per dimension + 25%
- 25 Pieces per dimension – 5%
- 50 Pieces per dimension – 7%
- 100 Pieces per dimension – 10%

Die buttons DIN 9845 A / B

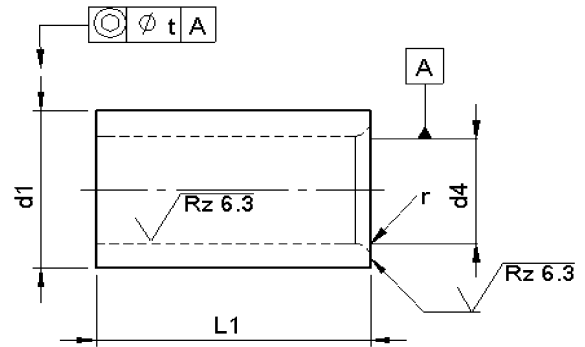


Material: HWS (1.2379)
Hardness: Shaft: 64 ±2 HRC

d ₁	d ₂	k	d ₃ H ₈ van t/m			l ₃	d ₄ ± 0.1	Form A		Form B	
								l ₁	l ₁	l ₁	l ₁
Type A n6	Type B k6						20	28	20	28	
							Price by piece in EUROS				
5	7	4		1.0	2.0	d ₃ + 0,3	23,10		27,78		
6	8		1.0	2.0	3.0	d ₃ + 0.3	15,82	20,34	18,52	24,59	
7	9		2.1	3.0	3.0	d ₃ + 0.5	13,17	16,48	18,52	19,85	
8	10		3.1	4.0	3.0	d ₃ + 0.5	13,17	15,32	18,52	19,85	
10	12		4.1	5.0	4.0	d ₃ + 0.7	13,17	15,32	18,52	19,85	
12	14		5.1	6.0	4.0	d ₃ + 0.7	13,17	15,32	18,52	19,85	
15	17		6.1	8.0	4.0	d ₃ + 0.7	13,17	17,81	17,14	21,44	
18	20		8.1	10.0	4.0	d ₃ + 1,0	13,17	18,80	18,85	22,77	
22	24		10.1	12.0	5.0	d ₃ + 1,0	16,15	18,80	19,46	23,98	
26	28		12.1	15.0	5.0	d ₃ + 1,0	21,44	25,91	25,96	31,37	
30	32		15.1	18.0	5.0	d ₃ + 1,0		32,19		39,52	

Intermediate diameters, other lengths and special materials e.g. ASP, CPM and Vanadis, are available on request.

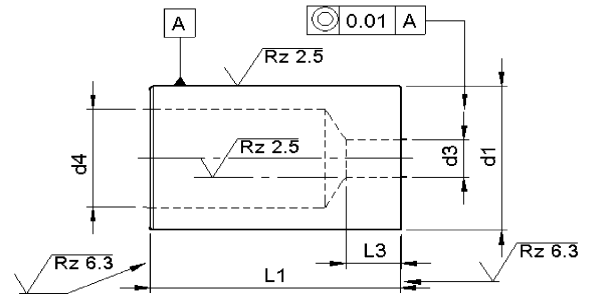
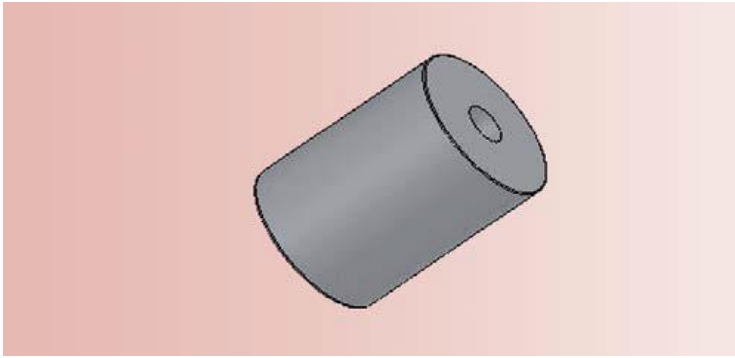
Die buttons DIN 9845 C



Material: HWS (1.2379)
Hardness: Shaft: 64 ±2 HRC

\geq	d_4 H_7	\leq	d_1 n_6	l_1	r	t	d_4	Price by piece in EUROS
		1.0	5	9	1.0	0.01	0.10	15,71
1.1		2.0	6	12	1.0	0.01	0.10	14,61
2.1		3.0	7	12	1.0	0.01	0.10	18,91
3.1		4.0	8	12	1.0	0.01	0.10	11,91
4.1		5.0	10	16	1.0	0.01	0.10	8,21
5.1		6.0	12	16	1.5	0.01	0.10	9,15
6.1		8.0	15	20	1.5	0.01	0.10	11,23
8.1		10.0	18	20	2.0	0.01	0.10	14,28
10.1		12.0	22	28	2.0	0.01	0.10	14,28
12.1		15.0	26	28	2.0	0.01	0.10	17,25
15.5		18.0	30	36	2.0	0.01	0.50	28,61

Die buttons ISO 8977 A With round holes



Material: HSS (1.3343)
Hardness: Shaft: 64 ±2 HRC

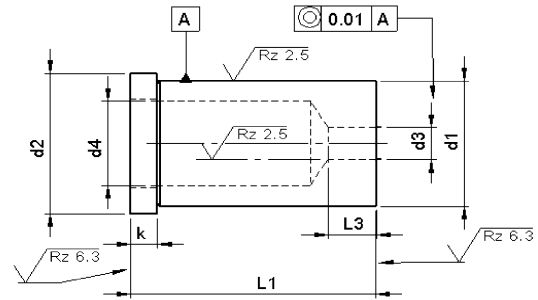
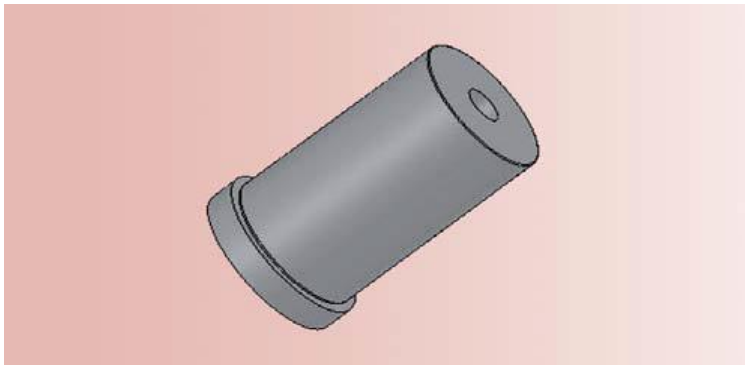
d ₁	l ₃	d ₃ +0.02 0			d ₄	l ₁ +0,5 0								
		≥	-	≤		16	20	22	25	28	30	32	35	
n ₅		Price by piece in EUROS												
5	2	1,0	-	2,4	2,8	18,38	18,62	18,87	19,11	19,36	19,60	19,85	20,09	
6	3	1,6	-	3,0	3,5	18,38	18,62	18,87	19,11	19,36	19,60	19,85	20,09	
8	4	2,0	-	3,5	4,0	18,38	18,62	18,87	19,11	19,36	19,60	19,85	20,09	
10	4	2,5	-	5,0	5,8	19,11	19,36	19,60	19,85	20,09	20,34	20,58	20,83	
13	5	3,0	-	7,0	8,0		20,15	20,40	20,64	20,89	21,13	21,38	21,62	
16	5	4,0	-	9,0	9,5		20,89	21,13	21,38	21,62	21,87	22,11	22,36	
20	8	6,0	-	11,0	12,0		21,62	21,87	22,11	22,36	22,60	22,85	23,09	
22	8	8,0	-	11,0	15,0		22,66	22,91	23,15	23,40	23,64	23,89	24,13	
25	8	8,0	-	16,0	17,3		24,07	24,32	24,56	24,81	25,05	25,30	25,54	
32	8	8,0	-	20,0	20,7		33,14	33,38	33,63	33,87	34,12	34,36	34,61	
40	8	19	-	27,0	27,7		52,43	52,68	52,92	53,17	53,41	53,66	53,90	
50	8	26	-	36,0	37,0		62,97	63,21	63,46	63,70	63,95	64,19	64,44	

Intermediate diameters, other lengths and special materials e.g. ASP, CPM and Vanadis, are available on request.

Extra charges and discounts:

- 1 Pieces per dimension + 50%
- 2-3 Pieces per dimension + 25%
- 25 Pieces per dimension - 5%
- 50 Pieces per dimension - 7%
- 100 Pieces per dimension - 10%

Die buttons ISO 8977 B With round holes



Material: HSS (1.3343)
Hardness: Shaft: 64 ±2 HRC

d ₁	d ₂	l ₃	d ₃ +0.02 0	d ₄	k +0.25 0	l ₁ +0,5 0							
						16	20	22	25	28	30	32	35
m ₅			≥ - ≤			Price by piece in EUROS							
5	8	2	1,0 - 2,4	2,8	5	20,83	21,07	21,32	21,56	21,81	22,05	22,30	22,54
6	9	3	1,6 - 3,0	3,5		20,83	21,07	21,32	21,56	21,81	22,05	22,30	22,54
8	11	4	2,0 - 3,5	4,0		20,83	21,07	21,32	21,56	21,81	22,05	22,30	22,54
10	13	4	2,5 - 5,0	5,8		21,56	21,81	22,05	22,30	22,54	22,79	23,03	23,28
13	16	5	3,0 - 7,0	8,0			22,60	22,85	23,09	23,34	23,58	23,83	24,07
16	19	5	4,0 - 9,0	9,5			23,34	23,58	23,83	24,07	24,32	24,56	24,81
20	23	8	6,0 - 11,0	12,0			24,07	24,32	24,56	24,81	25,05	25,30	25,54
22	25	8	8,0 - 14,0	15,0			25,11	25,36	25,60	25,85	26,09	26,34	26,58
25	28	8	8,0 - 16,0	17,3			26,52	26,77	27,01	27,26	27,50	27,75	27,99
32	35	8	8,0 - 20,0	20,7			35,59	35,83	36,08	36,32	36,57	36,81	37,06
40	43	8	19 - 27,0	27,7			54,88	55,13	55,37	55,62	55,86	56,11	56,35
50	53	8	26 - 36,0	37,0			65,42	65,66	65,91	66,15	66,40	66,64	66,89

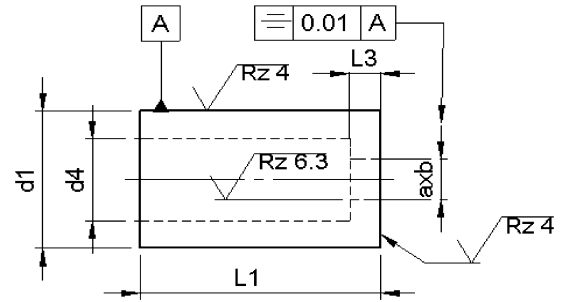
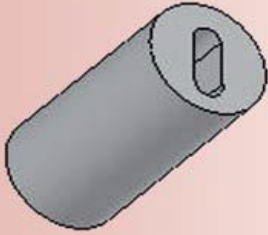
Intermediate diameters, other lengths and special materials e.g. ASP, CPM and Vanadis, are available on request.

Extra charges and discounts:

- 1 Pieces per dimension + 50%
- 2-3 Pieces per dimension + 25%
- 25 Pieces per dimension – 5%
- 50 Pieces per dimension – 7%
- 100 Pieces per dimension – 10%

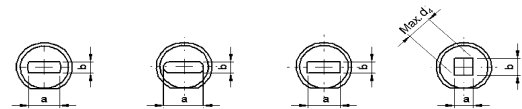
Die buttons ISO 8977 A..

With shape-hole



type 8979A F type 8979A O type 8979A R type 8979A S

Materials: HSS (1.3343)
Hardness: Schacht: 64 ±2 HRC



d ₁	l ₃	AxB ± 0.01		d ₄	l ₁ +0.5 0									Key flat
		B ≥	A ≤		16	20	22	25	28	30	32	35		
n ₅					Price by piece in EUROS									
5	2	1,0	2,4	2,8	19,85	19,85	19,85	19,85	19,85	19,85	19,85	19,85	19,85	6,40
6	3	1,6	3,0	3,5	19,85	19,85	19,85	19,85	19,85	19,85	19,85	19,85	19,85	
8	4	2,0	3,5	4,0	19,85	19,85	19,85	19,85	19,85	19,85	19,85	19,85	19,85	8,55
10	4	2,5	5,0	5,8	19,85	19,85	19,85	19,85	19,85	19,85	19,85	19,85	19,85	
13	5	3,0	7,0	8,0		19,85	19,85	19,85	19,85	19,85	19,85	19,85	19,85	
16	5	4,0	9,0	9,5		23,15	23,15	23,15	23,15	23,15	23,15	23,15	23,15	11,70
20	8	6,0	11,0	12,0		40,79	40,79	40,79	40,79	40,79	40,79	40,79	40,79	
22	8	8,0	11,0	15,0		47,78	47,78	47,78	47,78	47,78	47,78	47,78	47,78	
25	8	8,0	16,0	17,3		55,13	55,13	55,13	55,13	55,13	55,13	55,13	55,13	13,60
32	8	8,0	20,0	20,7		67,25	67,25	67,25	67,25	67,25	67,25	67,25	67,25	15,44
40	8	19	27,0	27,7			105,84	105,84	105,84	105,84	105,84	105,84	105,84	
50	8	26	36,0	37,0				137,81	137,81	137,81	137,81	137,81	137,81	19,85

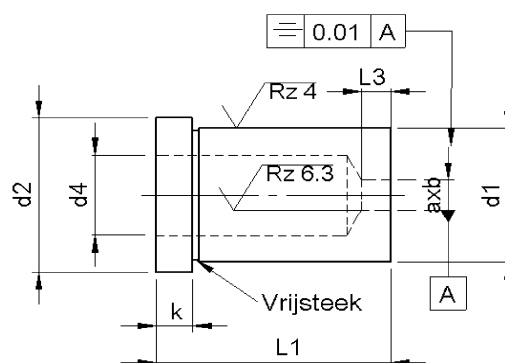
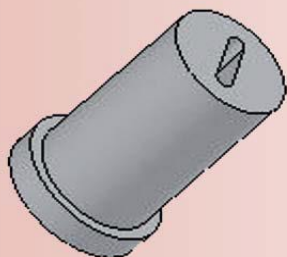
Without detailed specifications the locking is parallel to the major flat axis of surface 'a'.

Intermediate diameters, other lengths and special materials e.g. ASP, CPM and Vanadis, are available on request.

Extra charges and discounts:

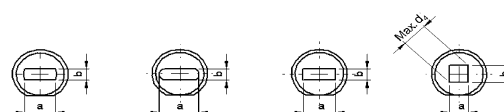
- 1 Pieces per dimension + 50%
- 2-3 Pieces per dimension + 25%
- 25 Pieces per dimension – 5%
- 50 Pieces per dimension – 7%
- 100 Pieces per dimension – 10%

Die buttons ISO 8977 B.. With shape-hole



type 8979B F type 8979B O type 8979B R type 8979B S

Materials: HSS (1.3343)
Hardness: Schacht: 64 ±2 HRC



d ₁ m ₅	d ₂	l ₃	AxB ± 0,01		d ₄	k +0.25 0	l ₁ +0.5 0								Key flat ½ d ± 0.01		
			B ≥	A ≤			16	20	22	25	28	30	32	35			
Price by piece in EUROS																	
5	8	2	1,0	- 2,4	2,8	5	22,05	22,05	22,05	22,05	22,05	22,05	22,05	22,05	22,05	6,40	
6	9	3	1,6	- 3,0	3,5		22,05	22,05	22,05	22,05	22,05	22,05	22,05	22,05	22,05	22,05	
8	11	4	2,0	- 3,5	4,0		22,05	22,05	22,05	22,05	22,05	22,05	22,05	22,05	22,05	22,05	8,55
10	13	4	2,5	- 5,0	5,8		22,05	22,05	22,05	22,05	22,05	22,05	22,05	22,05	22,05	22,05	
13	16	5	3,0	- 7,0	8,0			22,05	22,05	22,05	22,05	22,05	22,05	22,05	22,05	22,05	
16	19	5	4,0	- 9,0	9,5			25,73	25,73	25,73	25,73	25,73	25,73	25,73	25,73	25,73	
20	23	8	6,0	- 11,0	12,0			45,33	45,33	45,33	45,33	45,33	45,33	45,33	45,33	45,33	11,70
22	25	8	8,0	- 14,0	15,0			53,90	53,90	53,90	53,90	53,90	53,90	53,90	53,90	53,90	
25	28	8	8,0	- 16,0	17,3			61,25	61,25	61,25	61,25	61,25	61,25	61,25	61,25	61,25	13,60
32	35	8	8,0	- 20,0	20,7			74,73	74,73	74,73	74,73	74,73	74,73	74,73	74,73	74,73	14,45
40	43	8	19	- 27,0	27,7			117,60	117,60	117,60	117,60	117,60	117,60	117,60	117,60	117,60	
50	53	8	26	- 36,0	37,0			153,13	153,13	153,13	153,13	153,13	153,13	153,13	153,13	153,13	16,55

Without detailed specifications the locking is parallel to the major flat axis of surface 'a'.

Intermediate diameters, other lengths and special materials e.g. ASP, CPM and Vanadis, are available on request.

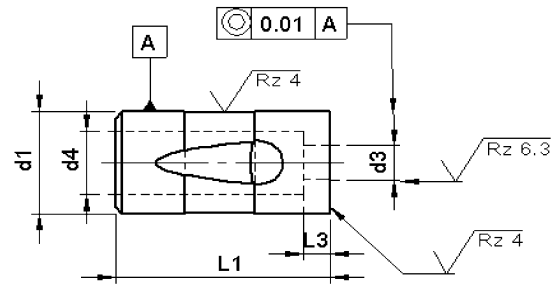
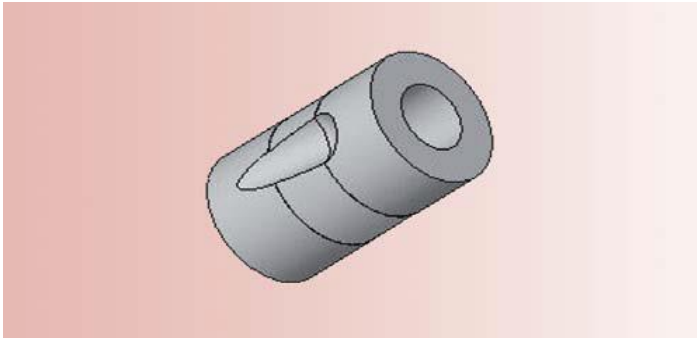
Extra charges and discounts:

- 1 Pieces per dimension + 50%
- 2-3 Pieces per dimension + 25%
- 25 Pieces per dimension - 5%
- 50 Pieces per dimension - 7%
- 100 Pieces per dimension - 10%

Gerimex b.v. Phone +31 74 2436655 . info@gerimex.com . www.gerimex.com

Die buttons type BTB

With round holes



Material: HSS (1.3343)
Hardness: Shaft: 64 ±2 HRC

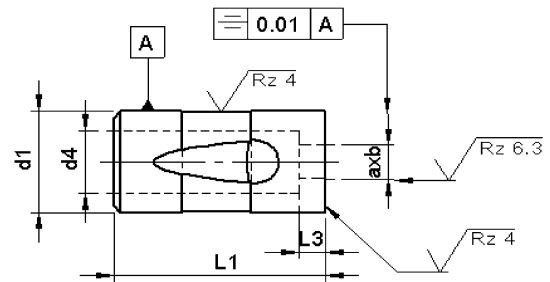
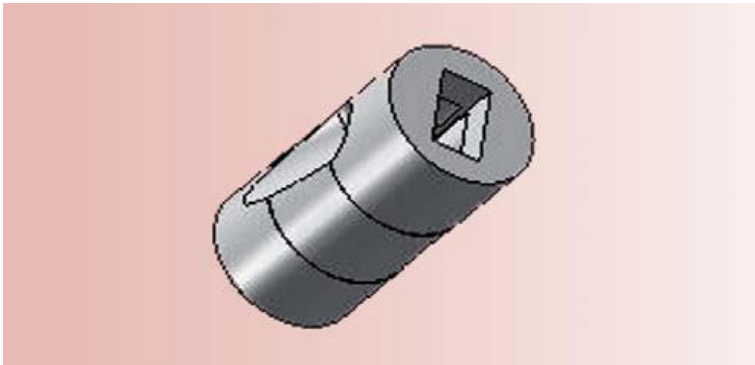
d_1 h_5	l_3	d_3 $+0.01$ 0		d_4	l_1 $+0.2$ 0	Price by piece in EUROS
		\geq	\leq			
13	3,5	3	- 7	7.5	32	22,91
16	4	4	- 8	9		26,22
20	4,5	6	- 11	12		43,86
25	5	12	- 16	17		58,19
32	6	13	- 20	22		70,32
38	6	16	- 26	28		108,90
63,5	7	25	- 50	51		165,38

Intermediate diameters, other lengths and special materials e.g. ASP, CPM and Vanadis, are available on request.

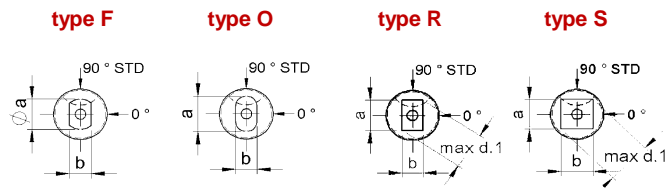
Extra charges and discounts:

- 1 Pieces per dimension + 50%
- 2-3 Pieces per dimension + 25%
- 25 Pieces per dimension - 5%
- 50 Pieces per dimension - 7%
- 100 Pieces per dimension - 10%

Die buttons type BTB.. With shape-hole



Material: HWS (1.2379)
Hardness: Shaft: 64 ±2 HRC



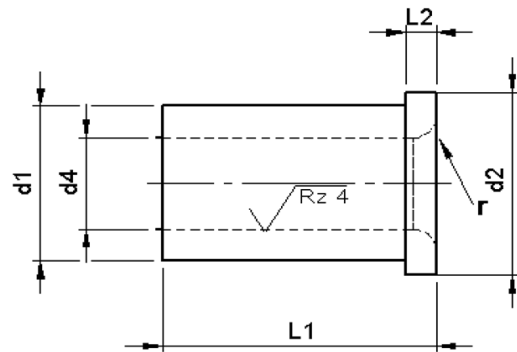
d ₁ h5	l ₃	AxB +0.01 0			d ₄	l ₁ +0,2 0	Price by piece in EUROS
		B ≥	A ≤				
13	3,5	3	-	7	32	22,91	
16	4	4	-	8		26,22	
20	4,5	6	-	11		43,86	
25	5	12	-	16		58,19	
32	6	13	-	20		70,32	
38	6	16	-	26		108,90	
63,5	7	25	-	50		165,38	

Intermediate diameters, other lengths and special materials e.g. ASP, CPM and Vanadis, are available on request.

Extra charges and discounts:

- 1 Pieces per dimension + 50%
- 2-3 Pieces per dimension + 25%
- 25 Pieces per dimension - 5%
- 50 Pieces per dimension - 7%
- 100 Pieces per dimension - 10%

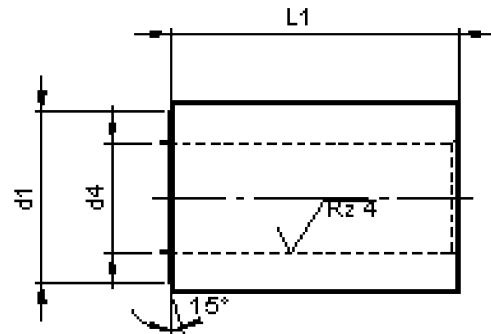
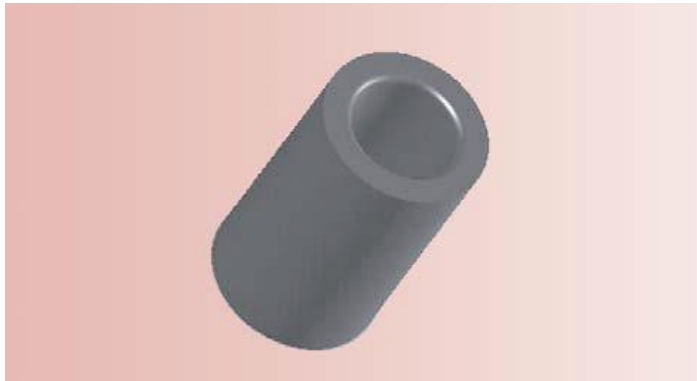
Press fit jig Bushes DIN 172 a With shoulder



Material: 1.7262
Hardness: 62-65 HRC

d ₄ F ₇	t/m	d ₃ n ₆	l ₁				l ₁		l ₁		l ₁	
			3	6	2	6	kort	EURO	middel	EURO	lang	EURO
0,4	t/m	1,0	3	6	2	6						
1,1	t/m	1,8	4	7	2	6						
1,9	t/m	2,6	5	8	2	6	6,77	9	7,31			
2,7	t/m	3,3	6	9	2,5	8	5,09	12	4,22			
3,4	t/m	4,0	7	10	2,5	8	4,09	12	4,42	16	6,83	
4,1	t/m	5,0	8	11	2,5	8	4,22	12	4,49	16	7,14	
5,1	t/m	6,0	10	13	3	10	4,36	16	4,56	20	7,88	
6,1	t/m	8,0	12	15	3	10	4,49	16	5,03	20	8,14	
8,1	t/m	10,0	15	18	3	12	5,03	20	5,50	25	9,14	
10,1	t/m	12,0	18	22	4	12	5,43	20	6,17	25	10,13	
12,1	t/m	15,0	22	26	4	16	6,17	28	7,17	36	13,44	
15,25	t/m	18,0	26	30	4	16	7,17	28	9,11	36	15,33	
18,25	t/m	22,0	30	34	5	20	8,38	36	10,86			
22,25	t/m	26,0	35	39	5	20	10,86	36	14,74			
26,25	t/m	30,0	42	46	5	25	14,07	45				
30,25	t/m	35,0	48	52	5	25	16,62	45				
35,50	t/m	40,0	55	59	5	30	21,78	56				

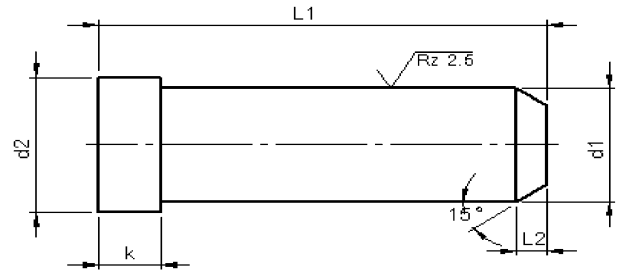
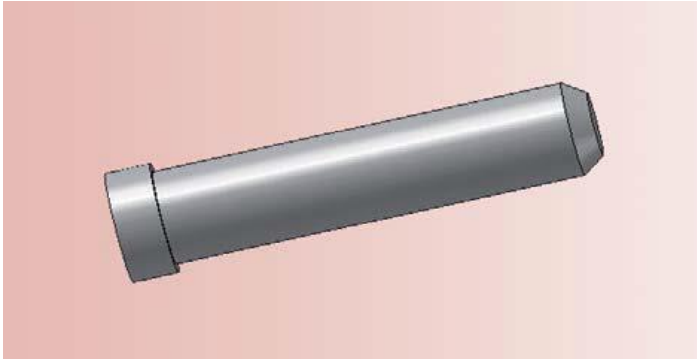
Press fit jig Bushes DIN 179 a Without shoulder



Material: 1.7262
Hardness: 62-65 HRC

d ₄ F ₇	t/m	d ₁ n ₆	Price by piece in EUROS						
			l ₁ kort	EURO	l ₁ middel	EURO	l ₁ lang	EURO	
0,4	t/m	1,0	3	6	*		*		*
1,1	t/m	1,8	4	6	4,29	9	5,90		
1,9	t/m	2,6	5	6	2,95	9	3,95		
2,7	t/m	3,3	6	8	4,36	12	3,28	16	6,37
3,4	t/m	4,0	7	8	3,15	12	3,35	16	4,79
4,1	t/m	5,0	8	8	3,35	12	3,55	16	5,11
5,1	t/m	6,0	10	10	3,35	16	3,82	20	5,23
6,1	t/m	8,0	12	10	3,82	16	4,09	20	5,62
8,1	t/m	10,0	15	12	4,09	20	4,83	25	6,64
10,1	t/m	12,0	18	12	4,83	20	5,50	25	7,09
12,1	t/m	15,0	22	16	5,23	28	6,97	36	9,32
15,25	t/m	18,0	26	16	6,23	28	8,38	36	10,79
18,25	t/m	22,0	30	20	8,44	36	11,39		
22,25	t/m	26,0	35	20	10,66	36	13,54		
26,25	t/m	30,0	42	25	12,80	45	15,68		
30,25	t/m	35,0	48	25	16,49	45			
35,50	t/m	40,0	55	30	21,85	56			

Guide pillar type G100

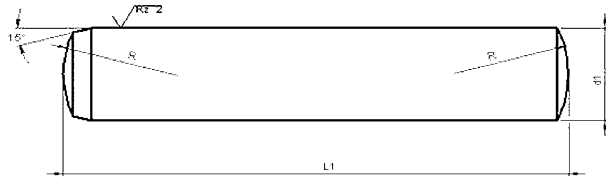


Material: 1.7262
Hardness: 60 ±2 HRC

d ₁ g ₆	10	12	14	16	18	20	22	24	26
d ₂	12	16	18	20	22	24	26	28	30
k -0,2	3	6	8	8	8	8	15	15	15
	Price by piece in EUROS								
l ₁									
40	5,51	5,84							
60	5,68	6,34	6,62	7,11	7,72				
80	5,84	6,78	6,95	7,72	9,59	9,48	11,03		
100	6,50	7,55	8,05	8,82	9,59	10,58	12,46	14,17	18,48
120	7,40	8,32	8,82	9,92	10,86	12,57	15,16	16,87	21,16
140	11,96	9,32	10,58	11,52	12,46	13,89	16,70	18,14	23,57
160	15,21	10,09	12,46	13,23	13,89	15,44	18,14	19,68	25,99
180			14,06	14,83	15,82	17,53	19,90	21,44	28,25
200			19,07	16,37	17,31	19,90		23,04	30,50
220			20,18	17,97	19,68	21,88	24,75	26,63	41,00
240				24,26	25,36	25,63		30,10	
260								36,38	

DOWEL PINS DIN 6325

Tolerances m6/h6



Hardness: 60 ±2 HRC

Price by 100 pieces in EUROS (m6-tolerance)

L	1,5	2	3	4	5	6	8	10	12	14	16	20
4	8,21											
6	8,54	4,91	5,68	8,27								
8	8,88	5,51	6,34	8,27	10,47	20,23						
10	9,26	5,95	7,11	9,76	10,64	17,42						
12	9,76	6,56	7,72	10,86	11,69	20,18						
14	11,19	7,22	8,54	10,09	15,55	17,71	28,17					
16	10,53	7,61	9,21	10,64	14,99	18,80	29,49					
18	10,47	8,60	10,03	11,74	15,77	22,71	31,42	47,02				
20	11,19	8,76	10,97	12,24	17,36	23,87	33,02	48,84	66,09			
24	13,29	10,09	10,91	13,67	18,47	26,35	37,10	58,05	72,05			
28		11,80	12,35	15,16	21,83	29,11	41,84	58,38	78,28			
32			13,40	17,03	23,26	31,86	44,87	66,21	88,37			
36			14,83	18,14	25,47	34,07	49,45	74,25	96,19	200,66		
40			16,98	20,07	25,52	36,71	51,54	78,44	98,12	196,25	239,24	
45				59,48	29,66	38,70	57,50	87,54	109,15	238,14	271,22	438,80
50					31,75	42,94	61,96	93,66	119,90	219,40	278,93	489,51
60					56,45	60,80	87,65	109,04	137,26	263,50	319,73	564,48
70					74,97	71,66	118,23	149,94	176,95	292,16	363,83	618,50
80					0,00	89,91	127,89		214,60	370,44	423,36	718,83
90						111,35	168,68		291,23	457,54	532,51	825,77
100						152,15	200,66		321,09	461,95	523,69	844,52
120							248,06		412,28	550,15	612,99	962,48

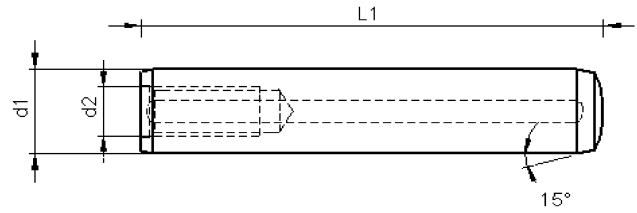
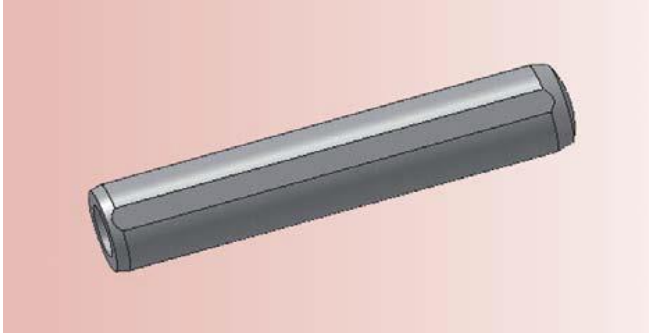
Minimum order quantity:

- Ø 1,5 t/m Ø5 100 pieces/dimension
- Ø 6 t/m Ø8 50 pieces/dimension
- Ø 10 t/m Ø30 10 pieces/dimension

Tolerances h6 = price m6 + 25 %

Gerimex b.v. Phone +31 74 2436655 . info@gerimex.com . www.gerimex.com

Dowel pins DIN 7979 D



Hardness: 60 ±2 HRC

d ₁ m ₆	4	5	6	8	10	12	14	16	20
d ₂	M3	M3	M4	M5	M6	M6	M8	M8	M10
l ₁	Price by piece in EUROS								
10	50,05	47,35							
12	51,82	31,97	39,69						
14	54,02	33,63	39,69						
16	58,27	52,53	39,69	58,82	135,61				
18	69,35	53,64	41,45	58,82					
20	63,95	54,63	41,45	58,82	58,65	148,84			
24	71,66	56,12	43,27	59,92	65,05	81,47			
28	82,69	58,21	45,32	58,82	72,32	91,89			
32	105,73	60,31	47,29	61,68	79,93	100,66	257,99	210,19	
36	94,54	41,23	49,45	64,55	92,17	109,09	292,16	232,63	
40	96,41	64,33	52,42	67,53	96,63	118,13	280,04	257,99	445,41
50	329,65	69,29	60,64	84,78	113,83	140,73	313,11	314,21	525,89
60			77,18	104,74	132,41	162,07	343,98	341,78	594,25
70			148,84	116,87	177,83	206,17	400,21	384,77	689,06
80				132,30	199,72	232,63	454,23	457,54	767,34
90				223,81	303,19	361,62	642,76	520,38	926,10
100				245,86	346,19	384,77	546,84	577,71	864,36
120				325,24	424,46	469,67	744,19	667,01	938,23

Minimum order quantity:

Ø 4 t/m Ø 8 50 pieces/dimension

Ø 10 t/m Ø 20 25 pieces/dimension